

Club Journal

August 2012

The magazine for all CIU members

75p

MPs CELEBRATE THE CIU'S 'MAJESTIC ACHIEVEMENT'

Members of Parliament have paid tribute to the work of the CIU as we celebrate our 150th anniversary.

The Deputy Speaker of the House of Commons, Lindsay Hoyle MP, addressed guests of the Union at a special reception in the Palace of Westminster's Churchill Room

The reception was hosted by Lord Bilston, Secretary of the All-Party Parliamentary Group for Non-Profitmaking Clubs, who told guests that the Government had joined him in congratulating the Union on what he called "a majestic achievement".

It was attended by members of all the main parties. As well as Lord Bilston, formerly the Labour MP Dennis Turner, guests included the Group's Joint Chairman Tory MP Brian Binley and leading Liberal Democrats Chris Huhne and Sir Alan Beith.

The Deputy Speaker is pictured with Union President George Dawson and Vice-President John Tobin. Full report and more pictures – Pages 10, 11.



A Tad special



The Olympic torch, carried by Claire Wood from Wetherby, passes Tadcaster Social Club in North Yorkshire. The club is organising the brewery town's first beer festival. Full story – Page 4.

CASE SETTLED

Former General Secretary Mick McGlasham has dropped his case for unfair dismissal and accepted a cash settlement. The case was due to be heard at the London Central Employment Tribunal last month but the two sides agreed a deal under which Mr McGlasham agreed to resign and not seek re-election. More details – Page 7

Flood-damaged club's President cleans up!

Club President Lesley Palmer was so busy helping clean up after the recent floods that she didn't know she had won more than £2 million on the National Lottery. Lesley, the President of Swillington Miners' Welfare Club near Leeds, helped clean the toilets at the flood-hit club, unaware how flush she was herself. Water had poured in through the ceiling and fused all the electrics at the club but she was so busy it took her nearly a week to check the numbers and find out she was a multi-millionaire.



Lesley Palmer and her husband Robin celebrate winning £2million on the National Lottery. (picture: Camelot)

"It's funny to think of a millionaire cleaning the toilets but it wouldn't have made any difference," she said. "I would still have been down here doing what I could to help the club. I'm still going to run the Children's Treat Section and help out with the bingo."

Lesley's good fortune is also the club's good fortune because she is paying £30,000 for the club to have a new roof – though because of the club's charitable status this will cost her a fraction of that.

Although their home was undamaged Lesley and her husband Robin were stranded there. He said that if he'd known they'd won the Lottery they could have hired a helicopter.

The couple, who have been married for 43 years, have used the same numbers since the Lottery began in 1994.

WETHERBY RACEDAY PAGE 20

Frankie sheds light on history

A certificate found in an old shed has led to celebrations at a Northumberland club.

Club Secretary Dave Fish received a phone call from a man who asked him: "Are you the Secretary of the Northern Social Club? I've got something belonging to you, you should have it back."

When Dave called round he found that Frankie Preston, a member of the Northern Social at its previous address in Woodhorn Road, Ashington, had bought the shed behind the old club at auction after it closed 40 years ago. Inside it he'd found a framed certificate from 1912, the year the club joined the CIU.

"He'd kept it and forgotten about it for 40 years," said Dave. "But when he came across it again he thought it should come back to the club.

"We didn't know when the club had joined the CIU. If he hadn't done that we would never have known it was our centenary this year."

Members of the Northumberland Branch Executive visited the club for the presentation of the club's centenary certificate. Pictured (back row, left to right) are : Rob Miller, Graham Swarbrick, National Executive member Sid Hicks, Dennis Wheadon, Rob Yeats and former Club Secretary Dave Atkinson. Front row: former Branch Secretary Tom Satterthwaite, Branch Secretary Dave Richardson, Dave Fish, Club Chairman Tucker Hetherington and Branch President Alan Hardy. Also pictured is the old certificate.

In April 1972 – around the same time as Frankie bought the shed – Dot Reed joined the club

as a barmaid and has been there ever since. "She's the most popular member of the staff and is loved by the lads in the bar," said Dave.



Turnbull Associates CHARTERED ACCOUNTANTS

are pleased to support the
South East Metropolitan Branch

~ SPECIALISTS TO THE CIU TRADE ~
For all your general Accountancy and

Audit requirements

Contact: Peter Sperling

Turnbull Associates

1 Morlew Yard, Marsh Lane, Taplow, Berkshire SL6 0DF.
Tel: 01628 667 952 Email: turnbullassoc@aol.com

Up to 35% off IHG weekend stays for Club Journal readers

Enjoy up to 35% off your next UK weekend break with friends or family at over 220 Crowne Plaza, Holiday Inn or Holiday Express hotels

The offer is valid until 31st December 2012.

To take advantage of this great offer plus some great package deals please visit www.ihg.com/members

or call 0871 423 4874 quoting 'Exclusive'

Calls to 0871 numbers are charged at £0.10 per minute when dialled from a BT landline. Terms and conditions apply.



Robin's good work



Robin Docherty from Old Woking Recreation Club in Surrey was presented with his 10-year Branch service certificate at the South East Metropolitan Branch dinner dance. A presentation to mark his 16 years of service as Branch Secretary was also made to Arthur Millard, who stepped down from the job last year.

Members of the Branch Executive are pictured (back row, left to right): Vice-President Andy Way, Frank Wilde, Keith Farmer, Chris O'Neill, Peter Gale and Dave Legge. Front row: President Trevor Baker, Robin Docherty, Secretary Sue Graham and Arthur Millard. The dinner, at Cheam Social Club in South West London, was sponsored by The Co-operative Bank, Dransfields, Heineken UK, Shepherd Neame and Turnbull Associates.



Ryan and Dylan arrive at the club in the American Ambulance.

Community rallies round to help Ryan

A Doncaster club has helped raise £15,000 to send a young boy to America for the medical treatment that has given him a new lease of life.

Four-year-old Ryan Golding, whose grandparents Bill and Carol are members of the Intake Social Club, suffers from a devastating form of muscular dystrophy. The club helped the family to raise the money they needed to fly to Texas to buy a Vectra machine, which helps circulate oxygen in the body, and learn how to use it. "I've never seen Ryan run before and we could hardly stop him," said Bill. "It was really wonderful to see what a difference the machine makes to his ability to get around. I can't get over the response from the community. People in Intake and at the club have been fantastic."

Concert Secretary Shaun Whitaker said: "Carol told me about Ryan's condition after our AGM and said they needed £15,000. A few days later I posted on Facebook asking for any entertainers and within 20 minutes I had my line-up of acts."

The evening featuring Chris Carr, Heidi Mills, Iconnetts and Olly Murs tribute and compere Tris Drew raised nearly £2,000 for the Ryan's Rainbow fund.

"The club gave them expenses out of our entertainment budget but they all gave



Ryan's grandparents Bill and Carol Golding are pictured with Andy Brailey (left) and Shaun Whitaker.

their expenses back to the fund," said Shaun. "It was a great event and a great morale booster for the Intake community. It just goes to show what people can achieve together."

A particular thrill for Ryan was that he and his elder brother Dylan arrived at the club in an American ambulance owned by Club Vice-President Andy Brailey, which was originally bought by a friend of his on ebay.

Solly's a hit in The States

The influence of Henry Solly has been felt in California, though perhaps not in a way he might have envisaged.

The San Diego LGBT Weekly wrote about a club called Guys Like Us: "It would be hard for the Rev. Henry Solly the founder of the first working social club, the Working Men's Institute and Social Club of 1862, to imagine a time when gay men of various ethnicities would ride the coat tails of such a novel idea and turn it into one of the most popular vehicles for gay men in San Diego to meet and socialise."

The Rev. Solly would be turning in his Oxfordshire grave though he might not know which way to turn.

TV men on hand

TV presenter Duncan Wood and weatherman Jon Mitchell were on hand when the Yorkshire Air Ambulance received a cheque for £3,400 at Darfield Road WMC near Barnsley.

The cheque was handed over by Mary Green from the Cudworth club's Charity Ladies, who since 1982 have raised more than £100,000 to various organisations, mainly departments of Barnsley General Hospital. Mary, a founder of the Charity Ladies and a former Stewardess of the club, is pictured presenting the cheque to South Yorkshire Regional Fundraiser Mark Perry.

Pictured with them (left to right) are: Club President Gary Parkin, Duncan Wood, who presents Yorkshire TV's "Calendar", Jon Mitchell, and National Executive member Ken Green (no relation), who is also Club Secretary and South Yorkshire Branch Secretary.



COMPUTER AIDED DESIGN

FULL INTERIOR REFURBISHMENT



call: 020 8541 4471

BARS CARPETS FURNITURE



www.easeco.co.uk

47-51 Hawks Road, Kingston upon Thames, KT1 3DS

contact@easeco.co.uk

Club is United to help our Services



WET WEATHER PLAN WORKS WELL

The weather didn't dampen the day when Felixstowe Trades & Labour Club in Suffolk had to move their "Music in the Car Park" day indoors. Thanks to good organisation and plenty of help from the Committee and members, a good time was had by all. Nine bands/solo acts performed during the day and evening in the club's function room and the children were entertained in the afternoon with games and dancing. A grand total of £1,520 was raised for Macmillan Cancer Support. The picture shows a cheque being presented by Tony Scott (right), who organised the event, and Club President Janet Ray to Mark Griffiths from Macmillan.

Egham United Services Club in Surrey raised more than £1,000 for Help for Heroes with a special open day to commemorate Armed Forces Day.

As befits its name the club decided to support our servicemen and women serving in faraway places as well as remembering service personnel who have fought for us in past conflicts. Among the events organised were a charity auction, a charity raffle, bring and buy sale, all day barbecue and face painting. The final amount raised for Help For Heroes was £1,338.20. "Our thanks go to all those who gave up their spare time and donated prizes to help with the event," said Club Secretary Richard Griffin. The club is featured in the Good Beer Guide and will be holding its latest beer festival from Thursday, August 16 to Saturday, August 19. The festival is open to non-members and all sessions cost £5, which includes a £2 refundable deposit for a festival glass. There is £1 discount available to CIU and CAMRA card-carrying members and guests of Egham USC members.



Club Secretary Richard Griffin's son Jack helps out on the sweet stall.

TADOCASTER IS FESTIVAL PRIZE



A social club is staging Tadcaster's first ever traditional beer festival this month – despite the North Yorkshire town being home to three of the country's largest breweries.

The beer festival on Saturday, August 4 is being organised by the steward and Committee of Tadcaster Social Club and will include live music and the chance to win an electric guitar.

Steward Cliff Edwards said: "It seems very odd that with the town being home to three of the biggest names in brewing – Coors, John Smith's and Samuel Smith's – that there hasn't been an event like this before.

"We intend to make it a memorable day. There will be 20 ales from breweries all over Yorkshire because we feel that Yorkshire has some great ales to offer apart from the mass-produced stuff."

Entry costs £5 but for that you receive a free pint, a programme, a commemorative free glass and discounted fish and chips. Live music, provided by local performers, will be featured outdoors, and the club is also organising a raffle with some unusual prizes.

Cliff, who is also known as McLeod, has donated an Encore "Tadcaster" guitar in plum with a faux mother-of-pearl scratch plate, which will be signed by all the performers on the day and framed. There will also be a signed and framed set of old and new pump clips from the Rudgate Brewery in York, whose beer is a permanent fixture at the club.



The electric guitar and certificate and (below) a poster for the Beer Festival.



Michael in the Middle

Wakefield Branch Secretary Gordon Winn (left) presented a Long Service Award to Michael Booth, President of Middlestown Social Club. Michael was also on hand for the presentation of a cheque for £400 to Help for Heroes and is pictured with the charity's Wakefield co-ordinator Neil Duce (left), County Co-ordinator Kevin Mitchell and club members Barbara Young and Christine Chester (second right), who organised the fundraising.



INGREDIENTS FOR THE RIGHT MIX



TEAMWORK: Everyone has specific roles to play in the running of a successful club

In just over 18 months, Tadcaster Magnets Sports & Social Club has not only doubled its membership but also its turnover following a radical overhaul of its appearance and operation.

Club Chairman and Trustee Allan Parry and two of his Heineken colleagues - Bobby Collins, Treasurer and Trustee and Graham Collins, Secretary - began pulling together a

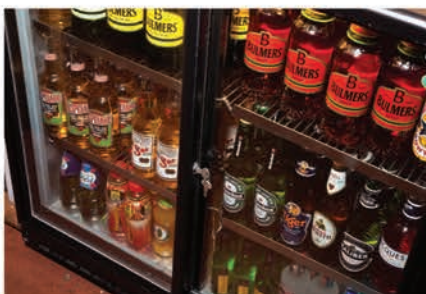
management team made up of local people with specific business skills to sit on the Committee.

"Each member of the Committee specialises in and has specific responsibility for focused areas of the business, such as Health & Safety, staff training, risk assessment, contracts etc. We also have an excellent team behind the bar who receive regular training through Heineken and we are aiming for a Cask Marque Creditation later in the year," says Allan.

"Membership is available to anyone at £20 a year, but with a chip & pin card you get a 25 per cent discount on bar prices. We are now at an all-time high of 1,050 members with a thriving junior section and encourage families to enjoy our facilities. On average we are bringing in



TRAINING: Pouring the perfect pint every time is something every member of the bar staff must do if members are going to come back for more



VISIBILITY: If members can see what you are offering, there's more chance they will try your premium-priced products



EXPERTISE: (L-R) Heineken's Graham Collins, Allan Parry and Bobby Collins

five new members per week after parties, christenings, weddings and other private functions so the business is still growing within the community.

"We lay on a varied events calendar which includes bonfire night, a Christmas panto, Sportsman's dinners, a new BBQ area which is open on Sunday afternoons throughout the summer and quarterly entertainment nights with top quality bands which we charge for and these nights are always full and tickets sold out well in advance."

According to Graham Collins, Social Media is playing a big part in the success of the club.

"We now have a member of staff looking after our website, Facebook page and Twitter account which are great ways of communicating with our members. With a lot of work sending out requests, we now have more than 900 people on Facebook who get every update we send out. We have also TVs around the club that are used for



advertising our activities and sporting events on a weekly basis. This also gives us an opportunity to advertise local businesses at a small cost.

Bobby Collins says: "Before we carried out major refurb work, we checked out what was available in Tadcaster and looked at what different age groups wanted from different venues.

"By recreating specific areas that we had seen, such as a welcoming lounge for the older members with comfortable sofas, contemporary stools near the bar and a sports section with large-screen TVs, there is now something for people of all age groups.

"Outside facilities are something not many outlets in the area have so we spent a lot of time planning ours and this almost doubles our trading space.

"We proactively encourage other clubs to visit us and see what we have done to turn a 'tired' club around. We believe that if a club is struggling, the Committee needs to



consider what it is not giving people, why aren't people coming in? How can they offer something different to attract new members? These are all things Heineken can help and advise individual clubs on and we would encourage them to contact us so we can work as a team to help them help themselves."



To find out more about the benefits of trading with Heineken in the UK or to arrange a meeting, call Peter Usher, Buying Group Director on 07831 840330

club IN ASSOCIATION WITH MANAGEMENT The co-operative bank

Follow the ACAS Code on disciplinary matters

Disciplinary and grievance procedures are frameworks which provide clear and transparent structures for dealing with difficulties which may arise between Committees and staff.

They are necessary to ensure that everybody is treated in the same way in similar circumstances, to ensure issues are dealt with fairly and reasonably, and that clubs are compliant with current legislation and follow the ACAS Code of Practice for handling disciplinary and grievance issues (see below).

Disciplinary procedures are needed to:

- let staff know what is expected of them in terms of standards of performance or conduct (and the likely consequences of continued failure to meet these standards).
- identify obstacles to individuals achieving the required standards (for example training needs, lack of clarity of job requirements, additional support needed) and to enable the club to take appropriate action.
- enable clubs and staff to agree suitable goals and timescales for improvement in an individual's performance or conduct.
- try to resolve matters without recourse to an employment tribunal.
- act as a point of reference for an employment tribunal should someone make a complaint about the way they have been dismissed.

Grievance procedures are needed to:

- provide staff with a course of action if they have a complaint (which they

are unable to resolve through regular communication with the Steward and/or Secretary.

- provide points of contact and timescales to resolve issues of concern.
- try to resolve matters without recourse to an employment tribunal.

The legal position

The important provisions governing discipline and grievances at work are currently to be found in:

- The Employment Act 2008
- The Employment Tribunals (Constitution and Rules of Procedure) (Amendment) Regulations 2008.

The CIU endorses the ACAS Code of Practice "Disciplinary and Grievance Procedures". Following it is crucial; an employment tribunal will consider whether the club has followed the Code and, if they have not, then the tribunal may adjust any awards made by up to 25% for unreasonable failure to comply. The Government wishes to simplify the disciplinary, grievance and dismissal process, if possible.

Using the process

There are two main areas where a disciplinary system may be used: capability/performance and conduct.

Capability issues may arise because a Staff member does not have adequate training, or is unable to do the work to a satisfactory standard for another reason. A club must try to identify the reason and

give appropriate support, prior to invoking a formal procedure.

Situations where an individual is unable to do their job because of ill-health may also fall into this category. In these instances a member of staff should be dealt with sympathetically and offered support. However, unacceptable levels of absence could still result in the club making use of warnings.

Staff misconduct could range from continued lateness, failure to follow a reasonable management instruction, abuse of the club's computer system or Internet access, bullying behaviour or creating a hostile work environment, through to theft, fighting and committing criminal offences. The more grave offences may constitute gross misconduct. In all cases, a club should follow the recommendations in the ACAS Code.

Whilst every care has been taken in compiling these notes, the writer, Andrew Dane, cannot be held responsible for any errors or omissions; the notes are not intended to be a substitute for specific legal advice which you should obtain from your Branch Office.

Trouble at the Phoenix

Life could be imitating art as the Bolton club made famous as the original venue of Peter Kay's Phoenix Nights faces losing its alcohol licence.

Police and neighbours have complained to Bolton council about underage drinking, youths causing trouble and people visiting the club without memberships – allegations club officials dispute. In the TV show Peter Kay's wheelchair-bound character Brian Potter famously lost his alcohol licence for flouting fire regulations.

The current licence forbids the club from letting in non-members, but it is alleged the club has allowed people to book birthday parties and other functions.

The Committee of the club, which is not in the Union, have said they were unaware they were supposed to restrict entry to members but will apply for a separate licence for the function room.

A recent meeting of the Council decided to defer a decision on whether the club should have its licence revoked.

The co-operative bank
good with money

We're right on cue when it comes to cash

Our **Business Current Account – Cash Tariff** offers competitive rates plus the convenience of paying in cash at the Post Office®.

To find out more
0800 0282 282
co-operativebank.co.uk/business

Lines open
8.30am to 5pm
Mon to Fri
ref: 39502



ANDREW DANE,
our employment
law expert,
would welcome
your questions,
which should be
addressed to
The Editor,
Club Journal,
CIU,
253-254
Upper Street,
London N1 1RY
or emailed to
cj@powdene.com

The Co-operative Bank is authorised and regulated by the Financial Services Authority (No. 121885), subscribes to the Lending Code and the Financial Ombudsman Service and is licensed by the Office of Fair Trading (No. 006110). The Co-operative Bank p.l.c., P.O. Box 101, 1 Balloon Street, Manchester M60 4EP. Registered in England and Wales No. 990937. Calls may be monitored or recorded for security and training purposes. For BT customers, calls to 0800 numbers are free. Call charges from other providers may vary and you may wish to check this with your service provider.



Stephen Goulding

New office manager appointed

The Union has appointed a new Head Office manager.

Stephen Goulding comes to the Union after working in management posts in the private, public and voluntary sectors.

Stephen, who is 53 and married with a son, specialised in working with the elderly and vulnerable when he worked in the social care team at the Department of Health. He has also worked for the London Ambulance Service, the Institute of Biomedical Science and the charity Motability, which adapts cars and scooters for disabled people.

Stephen studied music at Goldsmiths' College and has played in jazz, blues and rock bands at clubs across the country. He is a trained drugs counsellor.

He is also interested in politics and his role will include liaising with the All-Party Parliamentary Group.

Churchman jailed

The treasurer of a Catholic church social club has been jailed for stealing nearly £80,000 over three years to fund his gambling habit.

Luton Crown Court heard he was in sole charge of the accounts and that he had never stolen more than £1,000 at a time. Discrepancies only came to light when the club got into financial difficulties and a committee member, who was an accountant, investigated.

A BGO? - A Blinding Glimpse of the Obvious

KEEP IN TOUCH - AND LEARN SOMETHING

This month's BGO relates to our clubs' relationships with each other. Every Branch has at least one and sometimes more meetings in a year. Within Branches there are also Divisions or Panels, which meet on a far more regular basis.

These meetings have statutory functions such as presenting financial statements and electing representatives to serve on the various Executive Committees as well as keeping clubs updated on legislation and the work of the National Executive.

They can also discuss local matters and problems and some also have presentations by our National Account companies and various enforcement agencies.

Normally every club can send three delegates to each meeting. It was not so long ago that all these meetings had to be held in larger clubs because they were so well attended. Now meetings are sometimes cancelled because they cannot raise a quorum.

As clubs become separated from each other by not joining these meetings, it is only natural that a

Barry's BGOs



South East Midlands Branch President BARRY SLASBERG continues an occasional series of articles accentuating the positive as well as highlighting what should be obvious. If it's not obvious to you what a BGO is see below.

sense of isolation sets in and the feeling of being part of a great family of clubs diminishes. As clubs isolate themselves they then begin to ask what earthly use the CIU is to them.

The BGO is that by using together what the CIU has to offer through these invaluable meetings we gain strength in our unity. United we do stand - or have a far greater chance of it. Divided we fall - or again have a very good chance of it. If a club chooses to attend these meetings it has in its hands yet another tool that can enhance its chance of success.

Cautionary Tales Noise threatens club's future

A club in the West Midlands has been forced into paying for soundproofing because of complaints about noise from one neighbour.

The local council have taken action against the club - which is not in the Union - even though the neighbour built his house next to the club two years ago. He says noise levels on Saturday nights are excessive but, as another neighbour puts it: "it's like building a house next to a fish and chip shop and complaining about the smell." A petition of more than 300 names has been handed to the council in support of the club, which says it depends on its weekend music night to repay its debts. The council issued a legal notice in December banning the club from playing music beyond 11pm. They have told the club the soundproofing needs to be carried out by next month and will then decide whether to take away the licence following the complaints from neighbour Darren Mapp.

Mr Mapp first complained in July 2010 and, after visits from noise pollution officers, it was concluded that the sound "significantly" affected his property. He says the music is so loud he can make out the words of the songs.

The club has carried out some insulation work on problem windows and under the stage but with little effect. They now face a £4,000 bill to soundproof the whole building.

McGlasham case settled

Former General Secretary Mick McGlasham has dropped his case for unfair dismissal and accepted a cash settlement.

The case was due to be heard at the London Central Employment Tribunal last month but the two sides agreed a deal under which Mr McGlasham agreed to resign and not seek re-election.

A joint statement from both parties said: "There has been a legal dispute between Mr McGlasham and the Union. This relates to matters of serious concern.

"These matters were fully and properly investigated by the Union at the time. Mr McGlasham accepts that he made errors of judgement.

"The Union and Mr McGlasham have decided not to continue to argue about this in front of a judge. They have reached this decision on the basis it is in everyone's best interests.

"Mr McGlasham resigns his position with immediate effect and will not seek re-election as General Secretary."

Club Journal
Official Journal of the CIU

253-254 Upper Street, LONDON N1 1RY.
Telephone: 020 7226 0221 Fax: 020 7354 1847
Email: info@wmcu.org Website: www.wmcu.org.uk
Personal subscriptions: £7.50 per year
Editor: Ken Roberts

Editorial Office:
Powdene Publicity, Unit 17, St Peter's Wharf,
NEWCASTLE NE6 1TZ.
Telephone: 0191 265 0040 Fax: 0191 275 2609
News: Chris Brewis Email: cj@powdene.com
Advertising: Mike Lyon Email: info@powdene.com
Tel: 0191 488 7142

This just can't be right

By Phil Johnson

When is a consultation not a consultation? When it's about smoking.

Health Secretary Andrew Lansley recently announced one about putting cigarettes in plain packs but at the same time he said he wanted tobacco companies to have "no business" in the UK. If Jeremy Hunt is in trouble for being biased in favour of Rupert Murdoch where does that leave Mr Lansley, who does not seem to appreciate that approximately 12.5million people give the Treasury £1bn per annum as an accepted part of their enjoyment?

Channel 4 are looking for families to take part in a new documentary on what it means to be British. As the social club is a uniquely British phenomenon they believe a family of club members would be ideal.

If you are interested email families@loveproductions.co.uk or text or phone 07565 243 100

There is no commitment at this stage and all information is treated as confidential

Sir Humphrey in "Yes Minister" told us that it's a basic rule of Government that you don't set up an inquiry unless you know what its findings will be (unless you're David Cameron with Leveson, it seems) and this Government has taken fixing the verdict a step further.

A recent Freedom of Information request discovered that Smokefree South West, who have a slick billboard campaign in favour of plain packs on cigarettes, have been given £468,000 by the Government. They were asked if a private sponsor was paying for their campaign and said there wasn't – so Government money (ie our money) is being used to lobby the Government. This can't be right.

IN JUSTICE

I applied to the relevant people to be a part of this "public consultation." After all, I should be perfect for the job as I don't smoke, I seldom drink (any more) and I have a deep knowledge of the mechanics of smoking bans. I was turned down and have concluded, therefore, that they don't want any "public" in their "public consultation." How much longer are you all going to simply sit there and do nothing? I haven't stopped fighting the injustice of the total smoking ban since Day One. When are you going to join in and help your clubs to prosper once more?

Leicester clubman Phil Johnson, a member of Saffron Lane WMC in Leicester, continues to campaign to amend the smoking ban as chairman of the group Smokersjustice.co.uk

• Trying to get fewer people smoking is indeed an admirable cause and if science can be used to improve that cause then all well and good. A recent online article ahead of publication in the magazine *Tobacco Control* has given the game away, however. After research found New York's required point-of-sale anti-smoking posters had no effect on smokers' behaviour the article concluded: "Additional research aimed at evaluating the effect of tobacco control measures in the retail environment is necessary to provide further rationale for implementing these changes."

In other words: "We didn't find any evidence that the policy worked, but we are committed to the policy anyway, so future researchers should try to find evidence that it worked so that we can justify it after the fact."

By the way, isn't it telling that the anti-smoking industry have their own magazine, presumably it will fold when they ban smoking completely, which they might. I've said it before, if it's that's bad for you, why is it still legal? But we know the answer to that one, don't we, Mr Chancellor.

No half measures.



Insurance for CIU clubs

Our new specialist insurance for CIU clubs includes a number of updated risk assessment tools. These are designed to help you reduce the risk of a claim, and avoid yearly premium increases.

To make the most of these tools, our experienced Client Managers are on hand to ensure you get the policy that best suits your needs.

Speak to one of our Client Managers today

0845 287 2539

licensedtrades.aon.co.uk



Your Club, Your Insurance

Opening hours Monday – Friday, 9am – 5pm. Maximum call charge from a BT landline is 3p per minute. Calls from other networks may vary. Calls may be recorded. CIU Insurance Services is a part of Aon Limited. Aon Limited is authorized and regulated by the Financial Services Authority. Calls may be monitored or recorded. Aon Limited Registered Office, 8 Devonshire Square, London EC2M 4LL. Registered No. FN401311201.

NATIONAL ACCOUNT SUPPLIERS LIST

Here is a list of the current Union-recommended suppliers/
National Account holders:

Access2All

(H&S/Disabled access advice)

Mick Rickwood:

07862162276/01912092906.

michael@access2all.co.uk

Auditel (utility consultant)

Giles Branson: 07947039382.

Giles.Branson@auditel.co.uk

Aon (Club Insurance Services)

Andy Kitchener: 07989984260.

andrew.kitchener@aon.co.uk

Stuart Hall: 07983576565.

stuart.hall@aon.co.uk

Gareth Butler: 07779702240.

gareth.butler@aon.co.uk

Bissett Kenning & Newiss

(rating advisors)

Cathrine Moore: 0191272

5551.

[Cathrine.moore@bissett-](mailto:Cathrine.moore@bissett-kenning.co.uk)

kenning.co.uk

BOC Sureserve (gas)

Richard Nixon: 07768193174.

Richard.nixon@boc.com

Co-operative Bank

Paul Davies: 07803212331.

Paul.davies@cfs.coop

Cellarbright (line cleaning)

Hance McGhie: 07740367029.

hmcghie@cellarbright.co.uk

Coventry Silvercraft

(trophies etc).

Marie/Andy Oakley:

02476223374.

[andy@coventry-silvercraft.](mailto:andy@coventry-silvercraft.co.uk)

co.uk

Dransfields

(gaming machines/lottery

machines and tickets)

Alan Jackson: 01132 444 555.

[Alan.jackson@dransfieldsltd.](mailto:Alan.jackson@dransfieldsltd.co.uk)

co.uk

Envtec Services Limited

Phil Towndrow 01455 821177

philt@envtecservices.co.uk

Heineken UK

Peter Usher: 07831840330.

peter.usher@heineken.co.uk

Thompson & Bryan

(loss assessors and valuers)

Derek Lamb: 0121 428 4000

Walkers Snacks

(crisps and soft drinks)

Angie Sparling: 07740640425.

Angie.sparling@pepsico.com



Working Men's Club and Institute Union Ltd
CLUB MANAGEMENT DIPLOMA COURSE
2012/2013

Do you want to be an efficient club official?

Enroll and be updated on various subjects in Club Law and Accountancy such as 2003 Licensing Act and 2005 Gambling Act.

Examinations are optional but are a good opportunity to reinforce what you have learnt over the course and to be rewarded for it.

Course begins on 10th October 2012.

Enrolment fee of £32
 (Covers all distance learning lessons, ring binder etc.)

FINAL DATE FOR ENROLLING IS 3RD OCTOBER 2012

For further information and more enrolment forms you can:

- write to the Leisure Department, CIU, 253/254 Upper Street, Islington, London N1 1RY.
- telephone (020) 7226 0221,
- fax (020) 7354 1847
- email lucy.pitcher@wmciu.org
- or visit the CIU website www.wmciu.org.uk.

CMD COURSE ENROLMENT FORM 2012/2013

Please enrol me for the Course of Study and Examination for the Diploma. In the event of my being unable to continue my studies I will inform you immediately.

Please complete in **BLOCK CAPITALS**

Mr/Mrs/Miss:

Full Christian Name:

Surname:

Private Address:

Post Code

Daytime Tel No:

Email Address:

Name and Address of your club:

Post Code:

Associate Card Number:

Date of issue:

Position held (if any) in the club:

Union Branch to which the club is attached:

Have you previously sat the Examination for the Diploma? YES/NO If yes:

a) In what year?

b) What was the result?

Date:

Signature of applicant

DECLARATION OF CLUB SECRETARY

The above applicant is a financial member of the Club and holds the Union Associate and Pass Cards

CLUB SECRETARY

PLEASE ENCLOSE ENROLMENT FEE OF £32.00 (CHEQUE MADE PAYABLE TO: 'CLUB & INSTITUTE UNION') AND RETURN THIS FORM TO: LEISURE DEPARTMENT, CLUB & INSTITUTE UNION LTD 253 - 254 UPPER STREET, LONDON, N1 1RY

Closing date for applications for the 2012/13 CMD Course is 3rd October 2012

Exclusive Money Spinners!

NEW to clubs!

Dransfields Club Roulette

- Unique to the club market!
- Only available from Dransfields!
- Hear the wheel spin and the ball drop!

BE THE FIRST TO GET ONE!



Now you can compete with the betting shops!

The UK's largest range of club gaming machines with regular upgrades! PLUS - jukeboxes, lottery products, pool tables, multi-game quiz machines and bingo products.

Exclusive to clubs Dransfields TAX-EXEMPT machines -

Income from these Category B3A lottery machines is exempt from tax! There is NO VAT & NO LICENCE DUTY!



- NO VAT, NO LICENCE DUTY!
- NO OVERPRINTING CHARGES!

Call us now on **0845 094 1495**

GUARANTEED RAPID RESPONSE SERVICE - WHEREVER YOU ARE!



Dransfields

LOCAL SERVICE, NATIONAL STRENGTH

www.dransfields.com



PARLIAMENT SALUTES THE UNION

Parliamentarians from all parties met under the gaze of Sir Winston Churchill to pay tribute to the work of the CIU on its 150th anniversary.

A reception to mark the historic event was held in the Churchill Room at the House and was hosted by Lord Bilston, the Secretary of the All-Party Parliamentary Group for Non-Profit Making Clubs, who described the anniversary as "a majestic achievement."

The reception was addressed by the Deputy Speaker of the House of Commons, Lindsay Hoyle MP, who praised the work of the CIU over its 150-year history, and said its founder the Rev. Henry Solly had evidently lost the debate on whether alcohol should be served in clubs.

He apologised on behalf of the Speaker John Bercow, who was a strong supporter of our clubs and had intended to address the reception but had been delayed by Parliamentary business.

Earlier Union President George Dawson had also stood below the room's bust of Churchill to welcome guests, who included current and past members of the National Executive, Branch Secretaries and Presidents, representatives of National Account companies and Head Office staff. The reception took place on the day after former General Secretary Mick McGlasham

settled his employment tribunal and agreed not to seek re-election.

Union Vice-President John Tobin paid tribute to the Head Office staff who had continued to provide such service to the clubs in difficult circumstances and said he hoped the Union could put these events behind them.

Tory MP Brian Binley, the Chairman of the All-Party Group, said he would like to congratulate the Executive of the CIA – correcting himself he explained he had just been attending a debate on the security services – for their contribution to the social life of this country. He added that clubs were "loved by the police" because they create so little trouble.

Also in attendance were former Labour Whip, Lord Evans of Parkside, a founder member of the All-Party Group, who told guests about his first club, Jarrow Labour Club, and leading Liberal Democrats Chris Huhne and Sir Alan Beith.



Deputy Speaker Lindsay Hoyle (left) and All-Party Group Chairman Brian Binley address the reception.

anniversary.

Junior Communities Minister Baroness Hanham had replied that the Government congratulated the CIU but as clubs were private institutions it had no plans to commemorate the anniversary. Lord Bilston had continued: "My heart fills with pride in appreciation of the vital and outstanding service that the Club and Institute Union has contributed to the cultural, social, educational and creative life of working class communities throughout the length and breadth of Great Britain over these past 150 years, which we are joyfully celebrating this week.

PERNICIOUS

"Will the Minister kindly draw the attention of all government departments to the present burdens borne by the CIU – through years of pernicious legislation, and offer them some respite in these very harsh and difficult economic and social times?" In the same discussion Lord Grocott suggested to the Minister that she might like to place clubs in the category of Government business headed The Big Society "because we invented it long before anyone else did."

The full Hansard report can be found at <http://www.publications.parliament.uk/pa/ld201213/ldhansrd/text/120710-0001.htm>

Guests heard from Lord Bilston, formerly Labour MP Dennis Turner, that he had tabled a question in Parliament asking the Government what plans they had to celebrate the

Union President George Dawson welcomes guests to the reception.



REDUCE YOUR BUSINESS RATES

WE ARE CHARTERED SURVEYORS WITH A PROVEN TRACK RECORD IN REDUCING CLUBS BUSINESS RATES

NO WIN / NO FEE

FEE BASIS AGREED WITH THE CIU

▪ RATES ▪ VALUATIONS ▪ BUYING/SELLING ▪ RENT REVIEWS/LEASE RENEWALS ▪
▪ DEVELOPMENT ADVICE ▪

▪ ALL OTHER PROPERTY MATTERS ▪ ▪ SERVICES PROVIDED NATIONALLY ▪

18 Riverside Studios, Amethyst Road, Newcastle Business Park, Newcastle upon Tyne, NE4 7YL



0191 2725551



www.bissett-kenning.co.uk



rating@bissett-kenning.co.uk

Bissett Kenning are the sole recommended Rating Surveyors for the CIU

BISSETT

KENNING & NEWISS
CHARTERED SURVEYORS



RICS

The mark of property professionalism worldwide



New Office Manager Stephen Goulding is joined on the terrace by the rest of the Head Office staff. Left to right: Samantha Hagan and Uto Ekanem (Accounts), Marlene Bruce (Office Administrator), Maureen Hawkins (Recreation), Maureen Ross (Rules Secretary), Lucy Pitcher (Education), Annette Johnson (Rules Assistant) and Cath Fitzpatrick (Reception). Union Accountant Steve Connell was unable to attend. Below: Lord Bilston (right) introduces fellow clubman Lord Evans and National Executive members Sid Hicks (left) and Gordon Winn are pictured with the bust of Sir Winston Churchill.



• Lord Bilston updated the West Midland Branch at a meeting in his home town of Wolverhampton – where both he and his father were club officials.

He told Branch delegates at the New Invention WM Victory Club he held out no hope of the smoking ban being repealed but he and his colleagues in the All-Party Group were constantly lobbying to have a room set aside for smokers. With the ear of Lord Henley, the minister in charge, he felt progress was being made if slowly. The Group were also fighting Early Morning Restriction Orders. He had written to every Chief Constable requesting information on incidents involving club members and of the six who replied none had recorded any instances.

His motion allowing the 12 temporary event notices to be increased to 15 was a small step, he conceded, but not yet taken up by the government.

Branch President Des Flood asked what powers the Group had to impose their views on ministers. Lord Bilston replied that they had had no powers but many MPs in the group were passionate about club life and in many instances their scrutiny of a bill had influenced the final outcome.

Tyseley WMC President Richard Reynolds said many clubs were feeling the effect of the beer escalator that increases tax automatically over a three-year period. He felt the burden of tax and legislation on clubs encouraged members to drink at home. Lord Bilston agreed and said working class people now had comfortable homes with more entertainment that made them reluctant to venture past their front doors.

• The online petition on the beer escalator has 65,000 signature so far. There will be a Parliamentary debate if it reaches 100,000 by February. Sign it on <http://epetitions.direct.gov.uk/petitions/29664/>

STOP WASTING YOUR MONEY!



Going green has helped these clubs save **£1,000's...**
Your club is just a phone call away from doing the same!

Wadsley Bridge WMC Saving **£18,000 per year**

Oscott Social Club Saving **£14,000 per year**

Cricklewood Trades Hall Club Saving **£9,400 per year**

Firs Club & Institute Saving **£10,000 per year**

Nottingham Oddfellows Saving **£8,858 per year**

**ENERGY EFFICIENCY FUNDING NOW AVAILABLE,
BROUGHT TO YOU BY CARBON TRUST & SIEMENS**

01455 821177 www.envtecservices.co.uk



CellarBright
for clean beer & clear profit!

Do you need to reduce your costs?
Can you really afford to continue pouring beer down the drain?

**STOP, READ,
CALL FREE**

Have you heard of CellarBright?

Have you seen our ad every month in the Club Journal?

Have you nearly picked the phone up to call us?

Are you still wasting thousands on beer wastage each month?

If the answer is one of the above then you seriously need to call us. We have been a National Accounts Company with the CIU for 18 months now and have worked with many social clubs, pubs, hotels and a brewery.

There has never been a time like now, to cut costs in your club, you probably have made many and overlooked the beer wastage due to line cleaning. There will be various reasons for this, mainly the investment costs, well, think again, we have many flexible options to make it affordable, so, call now for a FREE no obligation survey.

Telephone: 0800 699 0268
Email: sales@cellarbright.co.uk
www.cellarbright.co.uk

IT'S LLANFAIR WHAT?

Quiz teams in South Wales and the West of England rose to the challenge when they were asked to identify the missing letter from



Llanfairpwllgwyngyllgogerychwyrndrob*lllantysiliogogoch - the Anglesey village that is officially the longest place name in Europe. The slight advantage given to the Welsh teams was redressed with some questions about rugby league but that didn't stop former National Champions Maesglas A from Newport finishing top with Maesglas B second and Aberkenfig Social from Bridgend third. A tight finish meant Morriston WMC from Swansea were pipped into fourth after being second going into the last round while Mark "The Beast" Labbett, previously a member of the Maesglas A team, now a star of the TV show "The Chase", was part of a guest team which would have finished third in the regional heat, which was again successfully staged at Bettws Social Club near Newport.

Gareth Evans from national sponsors Dransfields presented the winners' £160 cheque to the successful team of Trevor Parry, Gordon Galliford, Richie Parnell

and Colin Lloyd, watched by CIU Branch Secretaries Jim Harrison from Monmouthshire and Mark Brewer from Western Counties. Mark Brewer's club, Chippenham West End, was one of several to bring two teams which battled against each other leading to a great derby atmosphere, as most were more interested in beating their club colleagues than winning the whole quiz.

Although the West End Club's B team were unable to defeat the Chippenham A team - as they had done in the last two years - they did finish second last in the contest, winning them the £20 consolation prize.

Taking the Mick

Paul Davies from co-sponsors The Co-operative Bank provided the spot prizes of bottles of spirits for the closest guess to the usual unanswerable questions. One that aroused particular interest was how many women Mick Hucknall had claimed to have slept with in the three years from 1985 to 1987. In an interview with the Daily Mirror he said he had slept with "three women a day, every day" for

LLANFAIRPWLLGWYNGYLLGOGERYCHWYRNDROB*LLLLANTYSILIOGOGOCH

Q10: WHICH LETTER HAS BEEN REPLACED BY AN ASTERISK IN THIS PLACE NAME?

three years -- making a total, if he was telling the truth, of 3,285, though one contestant reckoned the answer was more likely to be zero.

The previous day the quiz was on the banks of the Oxford Canal when the Midlands heat was staged at Ansty (Warwickshire) WMC. Coincidentally setter Dave Cornish asked which Cheshire river is connected by the Anderton Boat Lift to the Trent & Mersey Canal. The answer, the River Weaver, was one of the four answers in a tough Connections round, the others being Bass, Sole and Peyton Place - though at least one team worked out the connection from Peyton Pla(i)ce alone.

Quiz teams rise to Welsh challenge



Gareth Evans from Dransfields is pictured presenting the winners' cheque for £160 to Maesglas Social Club captain Trevor Parry watched by (left to right) Gordon Galliford, Jim Harrison, Paul Davies, Mark Brewer, Colin Lloyd and Richie Parnell. Below: Chippenham West End B team members Jason Haines, Mark Brewer, and Lucy and Jean Cooper, receive their consolation prize cheque of £20 from Gareth Evans.



Former National champions Radford Road Social were one of three Coventry teams who made up the top three and will be representing the region in the national final at Alvaston & Crewton Club in Derby. The hosts were runners-up with a team that included Mick Kincaid and Carl Richards, previously members of the city's Stoke Ex-Servicemen's Club, who were the first winners of the CIU National Quiz in 2000, while Unicorn Social were third.

The spot prize winners, who all won cans of Bombardier Bitter from co-sponsors Wells & Young's, are pictured (opposite) with Dransfields representative Vince Timmons.

The remaining regional heat took place in Newcastle on Thursday,



July 26, after we went to press. The top three from that heat will join the 15 teams who have qualified already for the final on Sunday, September 2.

- the missing letter in that village name was a W.



Midlands champions Jamie Dodding, Nic Paul, Craig Element and Gareth Kingston from Radford Road Social Club are pictured with Vince Timmons from sponsors Dransfields.

Below: Vince congratulates spot prize winners Harvey Trupp and Tony Chambers from Stechford Social, Birmingham, Ian Harlow from Alvaston & Crewton Men's Social in Derby, and Craig Element.



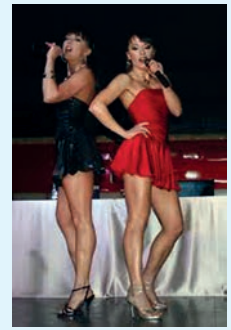
Wear just ahead



This year's Inter-city challenge between the Sunderland and York CIU Quiz Leagues was played at Peshaw Catholic Club on Wearside and ended in a win for Sunderland. Pictured (left to right) are the winning team: Ken Wilkinson, Dave Taylor and Tucker Mooney from Newbottle WMC, and Kevin Wilson from Peshaw Catholic Club. The result means Sunderland now lead the closely-fought series by nine wins to eight.

Which former MP dated a Cheeky Girl?

FORMER CIU National Quiz Champion Trevor Parry – pictured opposite after winning this year's South Wales and West of England regional final in Newport – from Quizmail supplies questions to national newspapers. Test yourself with these 10 teasers. Answers below. Trevor can be contacted on (01633) 264714



The Cheeky Girls – See Question 3 Gabriela Irimia?

1. The name of which American state appears in the company founded by Harland Saunders in 1952?
2. What 'P' word is given to the art and technique of making fireworks?
3. Which former MP famously dated 'Cheeky Girl' Gabriela Irimia?
4. What was the unit of currency of Greece prior to the euro?
5. In a school production of which Shakespeare play might you have had the opportunity to play Antonio, Bassanio or perhaps Portia?
6. Which Christmas carol contains the line 'I love thee Lord Jesus, look down from the sky, and stay by my side until morning is nigh'?
7. Armagnac is a variety of which liquor?
8. About which of their international players did Arsenal fans once sing 'He's blond, he's slick, his name's a porno flick...'??
9. In June 2007, who became the first female UK Home Secretary – resigning after her husband claimed expenses on a pornographic film ?
10. Which future US President was Director of Central Intelligence between 1976 and 1977?

Answers: 1. Kentucky (as in Fried Chicken); 2. Pyrotechnics; 3. Lembit Oplik; 4. Drachma; 5. The Merchant of Venice; 6. Away in a Manger; 7. Cognac (or brandy); 8. Emmanuel Petit; 9. Jacqui Smith; 10 George Bush (senior) – irony-free Americans have named the CIA headquarters in Virginia the George Bush Intelligence Centre.

HAYES WORKING MEN'S CLUB LATE NIGHT CABARET

September 29th

**'THE PIGGIES' (60s TRIBUTE BAND)
PLUS SUPPORT**

October 27th

**'BROTHERS OF SOUL'
(TEMPTATIONS AND MOTOWN TRIBUTE)
PLUS SUPPORT**

November 24th

**'RATS IN THE KITCHEN' (UB40 TRIBUTE)
PLUS SUPPORT**

**PUMP LANE, HAYES, MIDDLESEX UB3 3NB
SHOW £10 PER TICKET
(OVER 18 ONLY)**

Bar open until 1.00 am – Doors open 7.00 pm

**Coach parties welcome by prior
arrangement – please contact Secretary
for information and tickets on:
020-8573-1721**

CLUB OUTINGS . . . CLUB OUTINGS

BLACKPOOL & LANCASHIRE

BLACKPOOL No. 1 WORKING MEN'S CLUB & INSTITUTE

9-17 Bloomfield Road, Blackpool FY1 6DH. Tel: (01253) 343 508
 Extends a warm welcome to all CIU associates and bona-fide guests.
 ★ FREE ENTERTAINMENT ★
 7 nights throughout the summer season (weekends winter).
 Change of artists nightly.
 Coach parties welcome.

CONTACT THE SECRETARY IN WRITING

BLACKPOOL ROYAL BRITISH LEGION CLUB

33-38 King Street, Blackpool FY1 3EJ.
 Enjoy your visit with us at the club.
 Good all-round entertainment.
 Bookings for coach parties accepted.
 Room available for hire.
 Sec: Mr K Teasdale or Treasurer Mrs R Thomas
 Club: (01253) 626 308; Office: (01253) 290 322
www.blackpoolrbl.co.uk
 email: blackpoolbritishlegion@gmail.com

BLACKPOOL LMS SPORTS & SOCIAL CLUB

Back Ribble Road, Blackpool FY1 4AB
Tel: (01253) 625040
 A warm welcome to all CIU members and bona fide guests. Free entertainment, bingo, super-5, raffle and Find the Joker.
 Coach parties welcome. Room available to hire.
 Children over the age of 3 are allowed in the club.

You've been to the rest - now visit the best!

Voted the best club in the North West on TV's "The One Show".

BLOOMFIELD CLUB & INSTITUTE

128 Bloomfield Road, Blackpool FY1 6JW
 Free entertainment seven nights a week along with your favourite games
 • Bingo • Tote • Supa5.
 The club is on one level with disabled toilet facilities. Coach parties and football fans welcome.

Contact Secretary on **(01253) 344583**

Visiting Blackpool? Try Brun Grove WMC

Brun Grove, Blackpool. Tel: (01253) 762 186
 No admission charge to concert room.
 No beer price increases for visitors.
 Bingo - Tote - Raffle
 All associate members welcome.
 Parties welcome.

Brunswick WMC Bethesda Road, Blackpool. Telephone: (01253) 624 208

Coach parties welcome, also parking available.
 Entertainment 7 nights, comedians at weekends throughout the summer season. 2 large TV screens, cold food available. All branded doubles on offer. Smoking area at rear in beer garden.
 Wheelchair friendly. No beer increases for visitors.
 Contact Billy Hill, Club Secretary.

GOING TO THE RACES? Why not try BURNLEY MINERS WMC As seen on TV

2 minutes from the Town Centre and Turf Moor.
 Entertainment Friday, Saturday and Sunday.
 Coach parties by appointment.
 Breakfast and/or evening meal.
 Tel: Bar (01282) 422 791 or Office (01282) 835 429

KNOTT END WORKING MEN'S CLUB

Offers a great welcome to CIU members and parties. Why not try
 • a visit to the seaside • a ferry ride to Fleetwood
 • a bowling green competition
 or just our good food and entertainment.
 SALISBURY AVENUE, KNOTT END-ON-SEA, LANCs.
 Office telephone (01253) 810362
 Tel: Secretary Mrs Karen Bradford for dates and details **(01253) 812 226**

ROSEGROVE UNITY Working Men's Club

Holme Lodge, Rossendale Road, Burnley, Lancs, BB11 5DL.
 Situated 2 minutes from Junction 9 on M65.
 Large car parking space available.
 Entertainment Friday, Saturday and Sunday.
 Bookings must give 14 days' notice.
 contact Secretary on 01282 431 363 or e-mail rosegrove20@gmail.com

BRIGHTON & SUSSEX

Eastbourne & District Trade Union Club & Institute Ltd.

Clapham House, 48 Seaside, Eastbourne, East Sussex BN22 7OL.
 A warm welcome is guaranteed to all CIU associates and guests. A good selection of reasonably priced beers and spirits available. Temporary membership can be arranged at the door for all holiday makers. Large groups or coach parties are welcome with prior arrangements. Situated 5 minutes walk from the beach. Please contact secretary on (01323) 727703.

EASTBOURNE WORKING MEN'S CLUB

102/104 Firie Road, Eastbourne BN22 8ET.
Tel: (01323) 723322
Email: eastbournemwc@googlemail.com
 Visit the one and only workers' club in our lovely South Coast town. We have live music, raffles, bingo, darts, snooker and pool. See our Facebook page for coming events. A warm welcome to CIU members all year round.

Littlehampton Trades & Labour Club

Wick Street, Wick, Littlehampton BN17 7JH. Telephone (01903) 714 054
 A warm welcome awaits all visitors. Facilities include darts, crib and Sky TV. Catering for private parties can be arranged (14 days' notice please). Live entertainment every Saturday.
 Coach parties welcome with prior notice, please contact the Secretary.

ESSEX & EAST ANGLIA

COMRADES SPORTS & SOCIAL CLUB, CLACTON

A warm welcome awaits at both our premises. 205 Old Road, a short walk from seafront, has live entertainment Saturday evenings, disco Sunday afternoons, back garden and car park. 9 Colne Road is one minute from sea front. Live entertainment Tuesday, Thursday, Saturday afternoons and Saturday evenings. Pool, darts, raffles and bingo at both. Coach parties welcome by ringing the Secretary in advance on **(01255) 423 314**.

HUNSTANTON (NORFOLK) UNITED SERVICES SOCIAL CLUB

A warm welcome to all visitors. Large enclosed garden and car park with sea views. Three snooker tables, also pool table and darts. Bingo Mondays and Thursdays and one game Saturday evening. Live weekend entertainment. Catering arranged on request. Disabled friendly. Close to Sandringham Royal Estate, Coaches welcome midweek.
Contact Club Steward on (01485) 533360.

Naval & Military Club (Southend-on-Sea) 20 Royal Terrace, Southend SS1 1DU. Tel: (01702) 347169

A warm and friendly welcome awaits you. Large rear garden and roof terrace with fantastic views overlooking the seafront and estuary. Live entertainment Saturday nights and Wednesday afternoons. Hot and Cold Food available every day of the week. Local Real Ale Club of the Year. Coach parties welcome but must contact the Steward, Kevin Arkin prior to the visit.

Walton-on-Naze RBL Club

Vicarage Lane (off High Street). (01255) 674 153
 Visiting the seaside? A warm welcome and friendly atmosphere - two minutes from beach front.
 Live entertainment at weekends - sing-a-long Thursday afternoons - large screen TVs - pool - darts. Good range of drinks and bar snacks available. New membership available - CIU and RBL affiliated.
 Coach parties welcome! Contact Secretary

HAMPSHIRE & ISLE OF WIGHT

Lindford & District Working Men's Club

Liphook Road, Lindford, Bordon, Hampshire GU35 0PN. Telephone: (01420) 472 228
 A warm welcome is extended to all Associate Members. Only stipulation is children under five years old must leave the club by 9pm. Just off the A325 road between Farnham and Petersfield. So why not call in on your way to and from the south coast. Please give the Secretary 14 days' notice of party visits.

Newport (I.W.) Social Club

13-14 Lower St James Street, Newport, Isle of Wight PO30 5HB. Tel: (01983) 527 291
 Situated in the centre of town, with a warm friendly atmosphere where you can bring family and friends. Open all day, function room, snooker room, darts, pool and jukebox. Kitchen now open 7 days a week for hot and cold food. Coach parties always welcome by prior arrangement.

COWES COMBINED SERVICES & SOCIAL CLUB

85 High Street, Cowes, Isle of Wight PO31 7AJ.
 A warm and friendly welcome is extended to all visitors. Situated on the sea front with panoramic sea views from the stage dining area, the club has one of the best views in the country. Ideal for parties and outings. Freshly prepared meals available 7 days a week. Disabled facilities. Coach parties very welcome, please notify Secretary or bar manager in advance. Entertainment Friday and Saturday evenings.
Tel: (01983) 292921 email: rblcoves@onwight.net

HEREFORD & WORCESTERSHIRE

Hereford Welsh Social Club

1 Hinton Road, Hereford, HR2 6BL.
Tel: (01432) 269038/285974.
 Email: herefordwelshclub@hotmail.co.uk

A friendly welcome is extended to all Associate Members. Live Entertainment every Saturday evening.
 Hot and cold food available. Coaches welcome (please contact Secretary prior to your visit).

Please visit our website:

www.herefordwelshsocialclub.co.uk
"Hereford's most popular social club"

(HEREFORD) RICHMOND PLACE CLUB

69/71 EDGAR STREET, HEREFORD HR4 9JP
 A warm and friendly welcome to all associates, whether you are visiting for the races, football or just passing through. Live entertainment every Saturday. Sunday-Country & Western/Swing and Jive. Restaurant with hot and cold food available/Sunday lunches (Book in advance) Disabled facilities, Real Ales.
 Coach parties very welcome.
Contact Secretary, Les Walker on (01432) 356 529.

KENT

BEXLEYHEATH WMC

Royal Oak Road, Bexleyheath. DA6 7HG
 Telephone (0208) 303 2163
 Friendly atmosphere, comfortable surroundings and an excellent range of beers to quench your thirst. Everything you require on your visit to Bluewater and Lakeside shopping centres.
 Refreshments available.
 (Please give advance notice).

Let people know about your club by taking out an advertisement in our Club Outings guide for as little as £20 a month.

Thousands of club members take part in organised social trips or travel to sports events outside their own area. If you are close to a football ground or a racecourse, or in a convenient place to make a refreshment stop - let them know.

Ring Chris Brewis on **(0191) 265 0040** or email cj@powdene.com

SOUTHBOROUGH MEN'S CLUB

Forge Road, Southborough, Tunbridge Wells TN4 0EX.
Tel: (01892) 529 304; Office: (01892) 523 832
 A warm and friendly welcome is extended to all Associate members and guests. Ideal for parties and outings from the coast, we have frequent live entertainment on Saturdays, bingo on Wednesdays and Sundays. Sky TV, snooker and pool. Club open all day Friday, Saturday and Sunday. Coach parties and catering by arrangement.

SUNDRIDGE PARK WMC 134 BURNT ASH LANE, BROMLEY.

Tel: (020) 8464 3638 (Office); (020) 8460 6348 (Club)
 Located close to A21 and A20. A warm welcome is extended to all visitors. Two bars serving a wide range of drinks. TV in bar and the lounge. Purpose-built snooker room with four tables. Live entertainment Saturday and Sunday evenings. Coach parties by prior arrangement with the office.

Wainscott Institute (WMC)

4 Wainscott Road, Wainscott, Rochester, Kent ME2 4LB.
Tel: (01634) 717 464
 A warm welcome is extended to all CIU associates. Live music & bingo on a Saturday night. A range of facilities including snooker, pool & darts. We welcome coach parties by prior arrangement with the steward. Buffet refreshments can be arranged. We are close to all the motorways via the Medway towns. CHILDREN ARE WELCOME.

LEEDS & WEST YORKSHIRE

Visiting Blackpool or Yorkshire Coast? Haydock Park or York Races?

Then call at: Elland Working Men's Club Roseberry Street, Elland, West Yorkshire HX5 0HT
 For your breakfast on the outward journey. And for an evening's splendid entertainment on your way home. We are only 2 miles from Junction 24, M62 on the A629. A warm welcome extended to all Associate Members. Live entertainment on Saturday and Sunday evenings. Dancing on Thursdays to our resident organist. Fully modernised Concert Room and Lounge. Excellent Games Room. Floodlit Bowling Green. Large Car Park. Coach Parties welcome - please let us have 14 days' notice in writing to the Secretary Steve Graydon. Tel: Club (01422) 373 023. www.ellandwmc.web.com
 Telephone pre-bookings to be confirmed in writing to the Secretary.

Belle Isle WMC

Belle Isle Road, Leeds LS10 3PE.
 Warm and friendly club with large car park, good value beer and large concert room. Live bands Friday, Saturday and Sunday. Coaches welcome.
Contact Secretary on (0113) 2718 768.

CLUB OUTINGS . . . CLUB OUTINGS

SWARCLIFFE WORKING MEN'S CLUB

Swarcliffe Avenue, Leeds LS14 5DE
A warm and friendly welcome always assured in the comfortable surroundings of our recently refurbished club. Live entertainment every Friday, Saturday and Sunday evening. Relax in the quiet of the lounge or try a game of snooker on one of our three superb tables.
Big screen Sky Sports TV.

Planning a day at the races?
York, Wetherby, Ripon.

We are 2 minutes from the A64 and 5 minutes from the M1. Breakfast and evening meals for large parties available by appointment.

Contact: Glen Doyle (Secretary)
(0113) 2959100

LEICESTER & EAST MIDLANDS

NEW PARKS SOCIAL CLUB & INSTITUTE LIMITED

Battersbee Road, Leicester LE3 9LD
All coach parties welcome, with 14 days' notice to the secretary. Fully air conditioned large concert room. Hot and Cold Food available. Sky TV shown on big screen in the games room. Children allowed Friday and Saturday nights. If you have any questions please contact the secretary on Telephone (0116) 2333 305 or Fax (0116) 2333 303.

Nottingham Oddfellows Club

89 Humberstone GATE, Leicester.
TELEPHONE: (0116) 262 0181
262 5404 (Evenings) - CIU Affiliated

- ★ City Centre Club
- ★ Coach park right outside premises
- ★ 2 minutes from centre of Leicester

Coach parties and parties always welcome. Food supplied hot or cold - 7 days' notice or please phone prior to visit. Children welcome. Dances Monday, Tuesday and Friday. Entertainment available.

Phone or write to Secretary Eric Johnson

SAFFRON LANE ESTATE WMC

429 SAFFRON LANE, LEICESTER, LE2 6UF
Welcomes all CIU members to our friendly club here in Leicester. Only 5 minutes from the M1 junction 21 and close to the racecourse and the football, rugby and cricket stadiums.
Clean, comfortable and fully air-conditioned. Please visit our website where you will find details of all our facilities and activities.
www.saffronlanewmc.co.uk

SKEGNESS EX-SERVICE CLUB

2 Grand Parade, Skegness, PE25 2UN.
Telephone: (01754) 762113
Located on the seaford near the clocktower, 2-3 mins from town centre. Lounge bar, pool/children's room, 1st floor patio area. Reasonably priced beers/lagers and house doubles. Selection of chilled baps. Live entertainment every Saturday (Sundays main season). Open 11.30-11.30 most days. Pre-booked coaches welcome - come to a completely refurbished 21st century club.

LONDON

CRICKLEWOOD TRADES HALL CLUB

134 CRICKLEWOOD LANE LONDON NW2 2DP
TEL: (020) 8452 8614
A WARM WELCOME TO ALL AFFILIATED MEMBERS. COACH PARTIES WELCOME BY PRIOR ARRANGEMENT. 5 MINUTES FROM WEMBLEY STADIUM AND 2 MINUTES FROM BRENT CROSS SHOPPING CENTRE. LIVE BANDS AND BINGO ON SATURDAY AND SUNDAY NIGHTS. CONCERT HALL AVAILABLE FOR HIRE.

DONE OUR BIT EX-SERVICEMEN'S CLUB

128A MAYGROVE ROAD, LONDON NW6.
OFFICE: (020) 7624 3701; CLUB: (020) 7624 3603
Coach Parties welcome by appointment with the Secretary. Entertainment Friday, Saturday and Sunday. Food by arrangement. 15 minutes from Wembley Stadium. 10 minutes from West End. No children under 16 on Saturday.

THE HAMMERSMITH CLUB

Rutland Grove, London W6 9DH
10 mins' walk from Fulham FC and less than 25 mins by local transport to Chelsea and QPR. A warm and friendly welcome to away fans looking for good hospitality and a relaxing drink. Also 20 mins to Westfield, Europe's largest shopping centre and 30 mins to West End theatres. Contact us on (020) 8748 5760 or visit www.hammersmithclub.net

HARROW ROYAL BRITISH LEGION

Northolt Road, South Harrow HA2 0DW.
Extends a warm welcome to all Associate members and guests. Situated 10 minutes from the A40 and 20 minutes from Wembley Stadium. We have live bands every Saturday and Sunday night. Catering on request. Coach parties welcome with prior notification to Kath or Roy Roberts. Telephone: (020) 8422 1222.

Hayes WMC

Pump Lane, Hayes, Middlesex UB3 3NB.
Telephone: (020) 8573 1721
e-mail: bobdaybell@aol.com

Why not visit the flagship of clubs in the South? Ascot, Kempton Park & Sandown racecourses all nearby. Live bands every Friday and Saturday night. Late night cabaret last Saturday of every month, at least 3 acts, charge for entry, late bar. Catering available weekends, orders taken in advance to your requirements. Visit our website:

www.hayesworkingmensclub.com
for our full entertainment programme.
Coaches welcome by prior arrangement with the secretary.

ISLEWORTH CLUB

Goodenough House, 109 St John's Road, Isleworth, Middlesex TW7 6PN. Telephone: (020) 8560 2569
We are good enough - are you?
5 minutes from Twickenham Rugby and only 15 minutes from Kempton and Sandown. Call in on your way and give us a try. Pick your winners from our varied selection of popular beers which are available in either our large Concert Room or Lounge. Close to the M4 and M3. Please give prior notice for parties. Coach parties are welcome.

WATFORD EX-SERVICEL CLUB

12/14 St Albans Road, Watford, Herts WD17 1BN
Near junction 5 or 6 M1. Short walk from Metropolitan Line or Watford Junction, 25-30 mins from Wembley. Music every Saturday night and food served from 12pm to 8pm 7 days a week. Live football on big screen, pool table, dartboards, quiz night every Friday.
Coach parties welcome by prior arrangement.
Contact Alf Jobson Secretary
(01923) 236687

Wealdstone Social Club

Railway Approach, Harrow, HA3 5BX.
Tel: (020) 8427 3334
email: secretarywsc@btconnect.com
For 15 min connection to WEMBLEY STADIUM. Coach parties welcome. Free parking all day. Please arrange with Secretary for bookings. Function Hall available for private parties. Friendly staff - great beer - good company

NORTHAMPTONSHIRE & CAMBRIDGESHIRE

St James Working Mens Club

Weedon Road, St James, Northampton.
A warm welcome awaits all club members. Lounge, Games Room and large Concert Room. Parties welcome, catering if required by prior arrangement. 5 minutes M1, Junction 15A. Please contact Secretary Mrs P. Webster.
Tel: (01604) 456 602 www.stjameswmc.co.uk

SHEFFIELD & SOUTH YORKSHIRE

ARMTHORPE CORONATION CLUB

Tranmoor Lane, Armthorpe, Doncaster DN3 3BS.
Handy for racecourse and Doncaster Rovers. Close to M18. Big screen TV, entertainment every weekend.
Ring Club Secretary Alan Jones
on (01302) 831 393

Arundel Ex-Servicemen's Club

City Road, Sheffield
A friendly Club close to Town Centre Facilities include a 500 seat Concert Room, two other lounges and a Games Room. Great Cabaret every night except Tuesday and Wednesday. Coach parties please contact Mr B. Simmonite. Children allowed up to 10 years Catering for Buffet if required.
Telephone: (0114) 239 7151

CARCROFT VILLAGE WMC

Chestnut Avenue Carcroft, Doncaster DN6 8AG
Extends a warm welcome to all CIU affiliated members. Coach Parties welcomed by prior arrangement. 1 mile from A1 and close to M1, M18 and M62. Top class entertainment every weekend. Handy for Doncaster Races and trips returning from North or South coastal routes. Big Screen Sky TV and premier football. All enquiries to John Oldroyd, Secretary on (01302) 725 497.
www.carcroftvillagewmc.org.uk

Hawthorn Recreational & Social Club

Goodison Boulevard, Cantley, Doncaster. Tel: (01302) 536 565
Easily accessible for the Racecourse.
Big screen Sky TV.
Artistes on Saturdays.

INTAKE SOCIAL CLUB

Craithie Road, Doncaster DN2 5EG.
We are the closest club (5 minutes' walk) to Doncaster Racecourse. (See Page 19 for offers). Bar snacks available. Tremendous value-for-money bar prices.
Contact Secretary Tom Forester
in advance on: (01302) 320 036 or email intakesocialclub@yahoo.co.uk

Skellow Grange WMC

Skellow Road, Skellow, Doncaster DN6 8JL.
Tel: (01302) 338 304 www.skellowgrange.com
(Secretary: R. Lumley)
It's 1/2 mile from A1M motorway links gaining access from M62, M18, M1. Completely renovated club, top class entertainment at weekends and top class money tombola through the week. Bus parties welcome, ample parking space. Handy for Doncaster Races or call back from the coast. - All associates of CIU and guests welcome -

SURREY

CHERTSEY SOCIAL CLUB

Pycroft Road, Chertsey, 5 minutes M25 J11.
Country Club 1st Monday monthly; Line Dancing Wednesday; Bingo Thursday, Saturday and (fun) Tuesday afternoons. Live music Saturday; some Fridays. Thorpe Park 5 minutes; handy for Epsom, Ascot, Sandown, Kempton Park, Windsor Castle/racecourse and Chessington. Coaches and buffet/hot snacks by prior arrangement.
Tel: (01932) 563 265.

EGHAM UNITED SERVICES CLUB

111 Spring Rise, Egham, Surrey TW20 9PE.
"North Surrey CAMRA Club of the Year 2008 & 2009"
"Finalist for CAMRA Club of the Year 2009"
Located 5 minutes from J13 M25, handy for Windsor Castle and races, Kempton, Ascot, Epsom and Sandown. 5 mins from Egham Station on the Waterloo to Reading line. Three real ale and cider festivals a year. www.usuc.co.uk
Tel: (01784) 435120 or (07738) 714572
(Real Ale Festivals and Party Bars also arranged)

DAY OUT RACING ESHER W.M.C.

142 Esher High Street, Esher, Surrey.
Telephone: (01372) 467 758
Sandown Race Course within walking distance. Kempton Park and Epsom also nearby.
A warm welcome is extended to all associate members.

Walton Working Men's Club

21A Church Street, Walton-on-Thames, Surrey KT12 2QP.
Extends a warm welcome to Associate Members. Near M25/M3, Sandown and Kempton Racecourses, Hampton Court, Wentworth, Twickenham Rugby and Thorpe Park.
Ideal fishing - River Thames. Dancing to live music Saturdays/Sundays. Coaches. In writing to the Secretary.
Telephone: (01932) 220 361.

To advertise contact

Chris Brewis on
(0191) 265 0040
or email:
cj@powdene.com

THAMES VALLEY

THE ASHTON CLUB

24A SHEEP STREET, BICESTER, OXON
A friendly welcome is extended to all.
Snooker, pool, darts, darts, bingo, Sky TV, functions etc. Coach parties welcome, 40 mins from Newbury, Towcester racecourses, 5 mins from Bicester village shopping centre, and 5 mins from J9 M40.
Open all day. For more information please call the manager on (01869) 252160

Banbury Trades & Labour Club

32 West Bar Street, Banbury, Oxon OX16 9RR.
Tel: (01295) 215 7119 (H); (01295) 254 168 (Club).
A warm welcome is extended to all Associates. Coach parties welcome with 14 days prior notice to Secretary Joan Conley. Live entertainment on Saturday night. Food available. Please contact Secretary with your booking.

WALES

Bettws Social Club

Lambourne Way, Bettws, Newport, Gwent.
A warm friendly welcome assured to all CIU affiliated members and guests.
Less than 10 minutes from junction 26 of the M4. Coach parties welcome by prior appointment. Live entertainment every Saturday evening. Catering can be provided by arrangement. Tel: (01633) 858 780.

CARDIFF WEST END SOCIAL CLUB

COWBRIDGE ROAD WEST, ELY, CARDIFF CF5 5BY.
A very friendly welcome to CIU Associates and their families from CARDIFF'S PREMIER SOCIAL CLUB.
10 minutes from M4.
15 minutes to city centre.
Millennium Stadium,
Cardiff International Arena, St. David's Hall/Centre, Cardiff Bay.
Live entertainment every Saturday Night with Bingo/Raffle/Tote/Disco
FULL SKY SPORTS/RACING UK
Hot and cold food available.
COACH PARTIES MOST WELCOME.
Telephone: (029) 20594004

Going to Premiership Swansea City or racing at Ffos Las? Visit MORRISTON WMC

11 Slate Street, Swansea SA6 8AA.
A friendly club which makes visitors welcome. Liberty Stadium 15 minutes, Ffos Las 45 minutes, Ospreys 15 minutes. 10 minutes from M4 Junction 45.
Coach parties welcome with advance notice.
Ring (01792) 771580

Rogerstone and Bassaleg Social Club

1 Tregwilym Road, Rogerstone, Newport NP10 9DW.
A warm friendly welcome assured to all CIU affiliates and guests, less than 10 minutes from junction 27 of the M4. Coach parties welcome by prior appointment, live entertainment every Saturday evening.
Telephone: (01633) 893 508.

CLUB OUTINGS . . . CLUB OUTINGS

WARWICKSHIRE & COVENTRY

BEDWORTH EX-SERVICEMEN'S SOCIAL CLUB & INSTITUTE
Rye Piece, Bedworth, Nr. Nuneaton, Warwickshire. Tel: (024) 7631 3236
Extends a warm welcome to all associates. Restaurant facilities Monday to Saturday - Bar snacks also available. 6 minutes from junction 3 of M6. Approx. 5 miles to Coventry City. Saturday/Sunday night entertainment, live music, bingo, bar and lounge. Contact Secretary for bookings.

Willenhall Social Club

Robin Hood Road, Coventry CV3 3BB. Secretary: (024) 7630 1222 or 7630 3278. Welcome to all Associate Members. Entertainment every Saturday and Sunday night in concert room (seats 600). Bar, games room and luxury lounge facilities. Large car park. Hot and cold snacks available. 10 minutes from City Centre. No Children Allowed. Coach parties apply to Secretary.

HEN LANE SOCIAL CLUB
Beacon Road, Holbrooks, Coventry CV6 4DS. 5 minutes from M6 Junction 3, 10 minutes' walk from Ricoh Arena, minibus from club on match days. Excellent function room and facilities. Hot and cold snacks available at all times. Prior notice required for coach parties and catering (menu sent on request). Please contact the Secretary. Tel: (024) 7672 4830; Office: (024) 7672 4832.

UNICORN SOCIAL CLUB
Holbrook Lane, Coventry CV6 4DE. (5 mins from M6 J3). Just 15 minutes' walk from the Ricoh Arena, home of Coventry City Football Club. Excellent function room and facilities including games room and bar with large screen satellite TV. Modern air-conditioned facility with live music every Saturday evening and hot and cold food available. Prior notice required for coach parties, including official supporters' clubs. Please contact the Secretary at: unicorncoventry@yahoo.com or by telephone on (024)76 684741

WEST COUNTRY

The Cabbage Patch Club LAWRENCE WESTON SOCIAL CLUB
Lawrence Weston Road, Bristol BS11 0ST. Extends a warm West Country welcome to those travelling to holiday destinations. 3 mins from Junction 18 M5. 10 minutes M4. Coach parties by arrangement. Ring (0117) 982 9148

Poole Labour Club
22 Wimborne Road, Poole, Dorset Tel: (01202) 674 059 / 686 256
Offers the 3 S's to all affiliated members, Sea, Sand and Speedway! Centre of Poole, 20 minutes from Bournemouth, 2 minutes from Poole Stadium for Speedway and Greyhound Racing. Good beer, warm welcome, open all day. Entertainment on Saturday nights, Tuesday Tea Dances. Darts, Skittles, Snooker, Pool and Dominoes games can be arranged. Certain restrictions apply to children. Contact Secretary for details.

WESTON-SUPER-MARE WMC
Orchard Street, Weston-super-Mare. Telephone: (01934) 418 202
A warm welcome is extended to Associates and their families in Weston's premier club. Situated in the town centre and close to the sea front. Live entertainment every Saturday and Sunday evening, Sunday, Tuesday and Wednesday afternoon Bingo (Friday, Saturday and Sunday). Buffets arranged. Large downstairs concert room seating 250. Coach parties welcome including a Saturday. Please contact the Secretary giving prior notice of visit. Open all day.

WEYMOUTH WMC
MITCHELL STREET, WEYMOUTH, (Harbour End Of Town)
Less than 5 minutes from the beach! We welcome all CIU affiliated members. Music Friday & Saturday evenings, with Bingo filers on these nights. Plus the usual club activities. Restaurant now open. Tel: (01305) 786 392 or (01305) 787254 www.weymouthworkies.co.uk

WIDCOMBE SOCIAL CLUB
Widcombe Hill, Bath BA2 6AA. Tel: (01225) 425076 www.widcombesocialclub.co.uk
Large friendly club, 5 mins walk from city centre. Darts, skittles, snooker, dance floor, lakeside terrace, entertainment. Food including our famous Sunday roasts. Associates warmly welcome. Child friendly. Coaches by appointment. Catering available. Easy access from M4. After a day at Bath Races or a fabulous shopping trip, come and relax at Bath's hidden gem.

Passing through the Cotswolds? Then why not visit
Wotton Hall Club Ltd.
138 Barnwood Road, Gloucester - We welcome all Associate Members - Bar, Lounge, Ballroom and Games Room. Dancing every Saturday. Restaurant facilities and basket meals available. 14 days' notice required. Telephone: Secretary (01452) 610 025 9.00 am - 1.00 pm Monday - Friday

WEST MIDLANDS & BIRMINGHAM

Alvechurch SPORTS & SOCIAL Club
The Square, Alvechurch, Near Birmingham B48 7LD. A friendly welcome to all Associate Members. Weekend entertainment and comfortable surroundings, also food available. Close to M42 and M5 in a picturesque part of the countryside. Contact: A. Morrison, Secretary on (0121) 445 2121. Large parties please notify 14 days in advance.

REMEMBRANCE CLUB LTD.
10 CHESTER ROAD, CASTLE BROMWICH, BIRMINGHAM B36 9DD
Extends a warm welcome to all Associate Members. Live entertainment every Saturday and Sunday evening. Line Dancing Mondays. Ballroom Dancing Tuesdays. Large comfortable lounge. Games Room. Ample parking. Close to M6/M42 (nr. Spaghetti Junction). Coaches by arrangement. Contact the Secretary. (0121) 747 5256 / 747 2943

Yardley Wood Social Club
118 School Road, Yardley Wood, Birmingham B14 4JR. Club Tel: (0121) 474 2026 Sec: (0121) 474 3725
Visit our brand new website: http://www.yardleywoodsclub.com/ Two large TV screens, 6 snooker tables, bingo and weekly entertainment, bowling green. Function rooms available for hire and catering. Large car park at rear of the club. Associate members welcome.

YORKS (N & E) & NORTH EAST

BLAKELAW & DISTRICT SOCIAL CLUB
6 Cragston Way, Newcastle NE5 3SW. Friendly club on northern edge of Newcastle. Handy for A1, Racecourse and St James' Park. Coach parties welcome. Food can also be arranged. Contact Secretary Alan Campbell on (07986) 706354 or blakelawsc@googlemail.com

BEECHWOOD, EASTERSIDE & DISTRICT SOCIAL CLUB
Broadwell Road, Easterside, Middlesbrough TS4 3PP. (Opposite The James Cook University Hospital)
Live music every night with bingo, totes and raffles. Large bar with 4 snooker and 2 pool tables, 2 dart boards and all Sky sports channels. Two smoking areas with heated Beach Huts. Coach parties welcome with prior notice to The Secretary. Tel: (01642) 318789. Check the website it's all on there, www.beadsclub.co.uk

CENTRAL WMC
7 Beaumont Street, Darlington Tel: (01325) 464054
Situated near town centre, five minutes from A1(M). Associate members and coach parties are welcome as are football and racing followers. Please give prior notice. Live entertainment and catering by private arrangement. Room available for birthdays, engagement parties, wakes and weddings.

King Street Social Club
Phoenix House, 27 King Street, North Shields NE30 1BZ. Telephone: (0191) 2900473.
Situated on the main road from North Shields to the coast. Main bingo sessions are Tuesday and Friday evenings and Sunday morning. Top class live entertainment every weekend supported by resident band "Soul Machine". Coach parties welcome with prior notification to the Secretary David Farrell. Telephone (0191) 2900474.

Middlesbrough RAOB Club (The Buffs)
51 Wilton Street, Southfield Road, Town Centre A19-A66 2 minutes. Redcar races, 10 minutes. Middlesbrough FC 5 minutes. Games Room, TV Lounge and Lounge. Live entertainment Saturday and Sunday. Disco Wednesday and Friday. 50/50 Dancing Tuesday and Thursday. A warm welcome to all affiliated members including coach parties with prior notice to the Secretary. Telephone: (01642) 860 511.

New York Club & Institute Limited
22-26 Blossom Street, York YO24 1AJ. Tel: (01904) 612 244 newyorkclub@btconnect.com Secretary: Frank A. Healy BA HND CMD
300 yards from station on way to racecourse. Warm and friendly welcome to all Associate Members and guests. A great place to call into before or after your visit to York. Beer garden and 42" screen with Sky TV. Parties and buffet-style catering by prior arrangement.

Northallerton & District WMC
Elder Road, Northallerton, DL6 1NH. Tel: (01609) 772390 Email:Northallertonwmc@hotmail.co.uk
Situated in the picturesque county town of North Yorkshire, with easy access to A19 and the A1, we extend a warm welcome to CIU associates. Only 15 mins from Catterick, Ripon and Thirsk racecourses. Racing and football channels showing on four TVs. Raffle Fridays. Live entertainment and bingo Saturdays and Sundays.

North Biddick Social Club
Bonemill Lane, Fattfield, Washington NE38 8AN. Excellent riverside location. Five minutes from A1(M) with excellent car/coach parking facilities. Games room with 2 snooker tables and 2 pool tables. Restaurant facilities and buffets catered for. Why not call on your way to see football games or cricket games in the area? Coaches welcome by prior arrangement with Secretary Michael Normile on (0191) 416 0148
Why not visit our website at www.northbiddickclub.co.uk

OSBORNE WMC
Osborne Road, Chester-le-Street, County Durham DH3 3DS. 200 yards from the station and short walk to the Riverside Cricket Ground. Evening car and coach parking facilities. Live entertainment every Saturday night. A great place to call in after your day at the races. Bingo Mondays and Fridays. Just give us a ring on (0191) 388 8679.

POPPLETON ROAD WMC
132 Poppleton Road, York YO26 4UP (01904) 793398
A warm friendly welcome assured to all CIU affiliates and guests. Wide selection of beers available, ideal for the races and close to the city centre. Bingo and raffle Fridays. Live entertainment and bingo, Saturdays and Sundays.

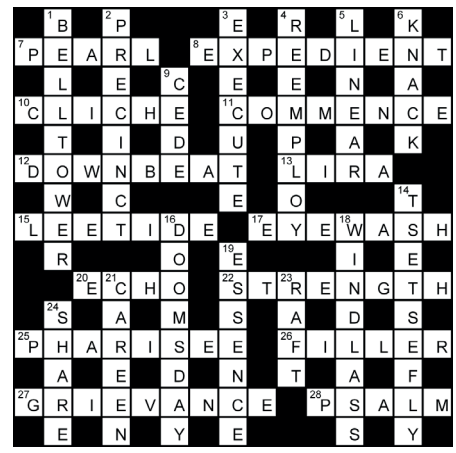
SPITTAL RESIDENTS ASSOCIATION
Jubilee Centre, Highcliffe, Spittal, Berwick-upon-Tweed TD15 2JL. A warm welcome to all. Five minutes from the A1, 30 minutes from Kelso Races, cabaret every Saturday evening. A spectacular evening once every month. Bingo Friday, Sunday and Monday nights. Coach parties welcome. Ring Treasurer Carol Lynn in advance on (01289) 305 597.

City of York Tramways Employees' Club and Institute
1 Mill Street (off Piccadilly), York YO1 1PY. 5 minutes from town centre
Entertainments Fridays, Saturdays and Sundays. Prize games. Concert room (seating 275), Games Room, Bar and live Sky Sports TV. Visiting Associates are welcome. Parties by arrangement. Telephone: (01904) 623 953.

CROSSWORD SOLUTION

Congratulations to the five winners of our £10 Prize Crossword for June:

Mr N Main of Bomersund & District Social, Northumberland; Brian Lawrence of Ferrybridge Progressive WMC, West Yorkshire; Sue Quinn of Poole Labour Club; Greg Burt of Saffron Lane Estate WMC, Leicester; and Mike Bowen of Newton Aycliffe WMC, Co. Durham.



CLASSIFIED ADVERTISING

ALTHOUGH the CIU has taken care to ensure that all advertisements are placed in good faith it accepts no liability for any advertisements in Club Journal. To place an advertisement in Club Journal contact Mike Lyon on (0191) 488 7142 or write to Club Journal, Unit 17, St Peter's Wharf, Newcastle NE6 1TZ. Fax: (0191) 275 2609. email: info@powdene.com

SPEEDCLEAN

THE ULTIMATE WAREWASHING RANGE



Heavy duty DISH & GLASSWASHING MACHINES offering unrivalled standards in speed, efficiency, reliability and durability.

FEATURES INCLUDE:

- built-in water softener
- 45 second wash cycle
- energy-saving insulated panels
- automatic detergent and rinse-aid dispensers

and ice makers

finance options to suit - full guarantee - nationwide service support

NELSON 0800 592 833
WWW.NELSONWASH.COM

WANTED CIU CLUBS

READ THIS IF YOU WANT TO SAVE CLUB MONEY!!!!!! GIVE ME A TRY

FRED BUTLIN CLUB ENTERTAINMENT SALE NOW ON! WE SUPPORT ALL CIU CLUBS.....
DISCOUNT FOR YOUR CLUB WHEN YOU BOOK QUALITY ENTERTAINMENT FROM FRED.
CHEAPER SINGERS, BANDS, DUOS... ALSO FREE RACE NIGHT AVAILABLE ASK EVERY
SOCIAL CLUB UK HELPED. EVERYWHERE UK COVERED.

TEL. 01143 601995 - MOBILE 07961 048686

EMAIL fred@fredbutlin.com - WEBSITE www.fredbutlin.com

Trent Pottery & Furniture



BQ/2 Available in gold, black or silver frame in any fabric C shown below. From £14.30

BQ/7 Gold frame in any fabric C shown below. From £23.30

BQ/1 Available in gold, black or silver frame in any fabric C shown below. From £13.50

BQ/5 Gold or silver frame in any fabric C shown below. From £23.30

150C 151C 152C 153C 154C

Email: sales@pubfurnitureuk.co.uk Web: www.trentpottery.co.uk
Tel: 0116 2864911 Fax: 0116 2869030

Style Seating

- * Fluted aluminium frame
- * Moulded seat foam
- * Light weight
- * 10 different fabric choices
- * 5 different frame colours
- * No visible fixings
- * FREE DELIVERY**
- * UK manufactured
- * 5 year structural warranty
- * Tested to BS EN 15373:2007 (test Level 3 - Severe Use)

From £41.95

From £19.95

From £38.95

Call for FREE 48 page brochure

tel: 01945 580099 www.styleseating.co.uk

PRIZE CROSSWORD

Every month we give five £10 prizes to a lucky five correct entrants.

ACROSS

- 1 Maps redrawn aboard steamship make for twitches. (6)
- 5 Image built up round pole - now there's a puzzle! (6)
- 10 Sort of circle found in main nervous system. (5)
- 11 Roughest plan I ever got into was morally good. (9)
- 12 Little French behaviour is frenzied. (7)
- 13 Tribune, writing about rotary engine. (7)
- 14 Outstrip England? - a bit mature! (5)
- 16 Extreme way to say more than anyone else? (9)
- 19 Saw tepees built like smelly bloomers! (and I'm not being rude!) (9)

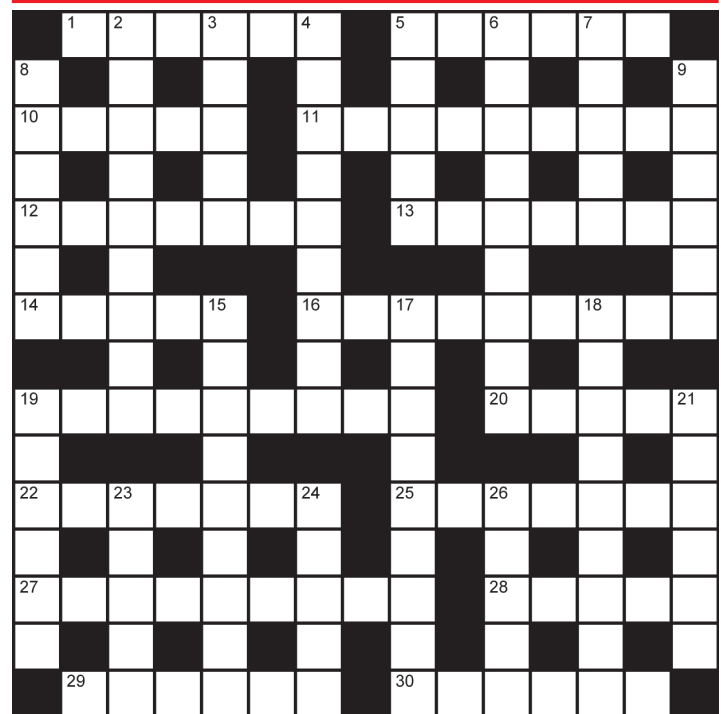
- 20 TV man Savalas. (5)
- 22 Affable sort of drink? (7)
- 25 It moves into reasons for actions. (7)
- 27 Former oak, say, linked with fog, said to be fanatic. (9)
- 28 Handy clothing for puppet type! (5)
- 29 Talkative, but chastity? - is to back off from. (6)
- 30 Here's your bit of false teaching. (6)

DOWN

- 2 Evergreen fruit? - in name only! (9)
- 3 Mackerel bait? Little bit fishy! (5)
- 4 Edifice has crust broken up in true style. (9)
- 5 It's a number of counter-weights. (5)
- 6 'Read' what the painter pretends to include. (9)
- 7 Major suit, not just for a Kiwi. (5)

- 8 Steal profiles not so carefully drawn. (6)
- 9 Claim it's a certainty briefly, I say. (6)
- 15 Food, in turn, met with difficulties. (9)
- 17 Try lighter version of event on pitch. (4,5)
- 18 Unaware? - it's obvious around 50-amps! (9)
- 19 Is not into kinesics - how to nauseate! (6)
- 21 Sycophants who've seen my organisation. (3,3)
- 23 Throw up during stretching. (5)
- 24 They work for God, but don't take His orders! (5)
- 26 Feline to mate with shark or lily. (5)

Send your entry to Crossword, Powdene Publicity, Unit 17, St Peter's Wharf, Newcastle upon Tyne NE6 1TZ, to reach us by August 31st.



Name.....

Address

Club.....

Last month's solution: page 16

Busy private members' social club require STEWARD/STEWARDESS

with partner to assist. Accommodation provided.

Please send CV with references to:

Office Manager, Sundridge Park WMC,
134 Burnt Ash Lane, Bromley, Kent BR1 1AF
or to spwmc1@btconnect.com

Closing date 20th August 2012

SALTBURN'S STARS



Pictured (left to right) are the winners of the Top Tipster challenge during the June racing break at Saltburn House. William Ingram from Barnsley Central WMC came third and won beer tokens; Tony Bloor from Smalley Common Ex-servicemen's Club, Derbyshire came second winning £25 and Dave Stenton from Bramley WMC, Rotherham was our top tipster winning £50.



Also pictured are Neil Slack (left) and Craig Clingan, also from Bramley WMC who each won £50 and a trophy for coming first in our golf tournament.



CIU SALT BURN HOUSE

2012 PRICES AND THEMED BREAKS

To book please ring 01287 622 008

PRICES

Non-member B&B = £36	Club member half board = £32
Non-member half board = £42	Convalescent stay = £29

Club parties over 15 people:
£25 per person with one room free.
Club parties over 35 people:
£25 per person with two rooms free.

THREE-DAY RACING BREAK - £175
Monday, August 27th - Thursday, August 30th
Racing at Ripon and Catterick
(Wednesday Evening)

TURKEY AND TINSEL
Friday 7th December-
Monday 10th December. £170.
New Year Party £180.
All prices include VAT

OBITUARIES

Jack Jones

It is with great regret that Leeds Branch announce the death of former Branch President Jack Jones. Jack served on the Branch Executive for 24 years, retiring in 2001, and he also served the members of Rowland Road WMC for 20 years as Club Secretary. He will be greatly missed by his many friends and associates and by all who had the pleasure of knowing him. Condolences go to his wife Doris and daughter Janet.

Eddie Imray

Newcastle RAOB Club regret to announce the death of their long serving Club Secretary Eddie Imray at the age of 74. Eddie was a Committee member for more than 40 years, the last 27 as Club Secretary. He received the Distinguished Service Award in October 2011. Eddie's legacy is that he has left the club in a healthy and solvent position. He was in the club seven days a week; it was his whole life.



He will be sadly missed by the Committee and members alike.

Neville Smith

High Street Social Club in Blyth, Northumberland regret to announce the death of their much loved and respected Trustee and Treasurer Neville Smith.

Neville, who gave more than 45 years' service to the club, was a perfect gentleman and will be sadly missed by all those who had the pleasure of knowing him.

Condolences go to his sisters Edna and Veda, son Colin, daughter Beverly and all their families.

Sydney Woodhouse

It is with regret that Arnold WMC in Nottingham announce the death of their former President Sydney Woodhouse. Syd, who was 84, had been a member since the age of 18. He joined the Committee in 1954, becoming Vice-President in 1990 and President in 1993.

Syd received his Long Service Award in 1979 and his Distinguished Service Award in 2000. After retiring as President he went on to become the club's handyman.

With Syd what you saw was what you got. He was very abrupt but fair and at his funeral it was said that he had lots of friends but also quite a few enemies.

CLUB NOTICES

Club Applying for Membership of the Union

Brownhills (Hednesford Road)
WM Club
8 Hednesford Road
Brownhills
Walsall
WS8 7LS
(West Midland Branch)

Club Closed

Shrewsbury Midland Red Social Club
(West Midland. Branch)

Suspensions Expiring on Dates Mentioned

Mr D Cain (26th December)
Bloomfield Club, Blackpool

Expulsions

Not now member of the following clubs.
They should not be admitted as Union associates.
Mr R Bell (No.50) Wallsend Labour Club, Tyneside
Mr Brian Drage (D.10) Brafield WMC, Northants
Mr T Nixon Jnr, Eltham Hill Club & Inst, London SE9
Mr Ronald Remmant (No 7) Walton WMC, Surrey
Mr Jack Tatnall (No.10) Walton WMC, Surrey
Mr Carl Watkins - Crowborough Social Club, East Sussex - South East Met Branch

CLARIFICATION

The Committee at Snodland WMC have ruled that, due to a procedural error, the suspension of Mrs J. Kenny's membership should not have been implemented. Mrs Kenny's suspension has therefore been lifted. There is no change to the suspension of Mr Hickmott or Mr Harris.

CIU RACING CLUB



THE CIU Racing Club uses the bulk buying power of more than 2,000 clubs to obtain special discounts from racecourses. You can make a booking by filling in the form at the foot of this page. To obtain the discount we send all the forms to the racecourse together as one block booking and they will send you the tickets at your club a few days before the meeting. Tickets are sent to the club as otherwise anyone could buy them. We need to receive your booking three weeks before the meeting otherwise we cannot guarantee you will receive the discount because late bookings do not save the courses any work.

To register your club as a member of the CIU Racing Club ring **Jean Garrett** on (0191) 2650040. As well as receiving regular updates and the full list of offers you will receive a free copy of Club Journal. Remember that even if a meeting is not listed here you can obtain a party discount direct from the course. Satellite racing channel RACING UK is offering all CIU clubs a 30 per cent discount. For further information ring 0870 351 8834. **A selection of offers are printed here. The full list has been sent to registered Racing Club members and can be also be found on the CIU website.** (All offers Tattersalls unless stated otherwise)

NORTHERN RACING - A DAY OUT FOR £10

Northern Racing, who operate Bath, Brighton, Chepstow, Ffos Las, Fontwell, Great Yarmouth, Hereford, Newcastle, Sedgefield and Uttoxeter Racecourses, are again offering their £10 across-the-board deal for Grandstand & Paddock tickets throughout 2012. The offer applies to all meetings with certain exemptions such as Plate Day, Fighting Fifth and Ladies Day at Newcastle; Midlands Grand National and Ladies Night at Uttoxeter; Welsh National Day at Chepstow; the Eastern Festival and Ladies Day at Great Yarmouth, August Festival at Brighton and the Ladies Day fixtures at Fontwell and Ffos Las.

Fixtures for which the offer applies include:

Sun, Aug 26: Yarmouth	Wed, Oct 3: Newcastle	Sun, Nov 11: Ffos Las
Monday, Aug 27 (BH): Chepstow, Newcastle	Fri, Oct 5: Fontwell	Tues, Nov 13: Sedgefield
Thur, Aug 30 (eve): Fontwell, Hereford	Sun, Oct 7: Uttoxeter	Fri, Nov 16: Newcastle
Mon, Sep 3: Ffos Las	Tues, Oct 9: Brighton	Sun, Nov 18: Fontwell
Wed, Sep 5: Bath, Hereford	Sat, Oct 13: Chepstow	Thur, Nov 22: Hereford
Thur, Sep 6: Sedgefield	Sun, Oct 14: Ffos Las	Fri, Nov 23: Ffos Las
Fri, Sep 7: Brighton, Chepstow	Tues, Oct 16: Newcastle	Tues, Nov 27: Sedgefield
Sun, Sep 9: Fontwell	Thur, Oct 18: Brighton, Uttoxeter	Wed, Nov 28: Fontwell
Mon, Sep 10: Bath, Newcastle	Sun, Oct 21: Bath	Thur, Nov 29: Uttoxeter
Wed, Sep 12: Uttoxeter	Tues, Oct 23: Yarmouth	Wed, Dec 5: Hereford
Thur, Sep 13: Chepstow	Wed, Oct 24: Fontwell	Sat, Dec 8: Chepstow
Sat, Sep 15: Bath, Newcastle	Sat, Oct 27: Chepstow	Tues, Dec 11: Fontwell, Sedgefield
Sun, Sep 16: Bath, Ffos Las	Tues, Oct 30: Yarmouth	Sun, Dec 16: Hereford
Mon, Sep 17: Brighton	Thur, Nov 1: Hereford	Mon, Dec 17: Ffos Las
Sun, Sep 23: Uttoxeter	Fri, Nov 2: Uttoxeter	Fri, Dec 21: Uttoxeter
Mon, Oct 1: Bath	Wed, Nov 7: Chepstow	Sat, Dec 22: Newcastle
Tues, Oct 2: Sedgefield	Fri, Nov 9: Fontwell	Mon, Dec 31: Uttoxeter

SALTBURN RACING BREAKS
THREE-DAY RACING BREAK - £175
 Monday, August 27th - Thursday, August 30th
 Racing at Ripon and Catterick (Wednesday Evening)

BUY YOUR OWN COPY. . . and pay less

Here's your chance to have your own personal copy of *Club Journal* for less than you'd pay for it at the club.

Fill in this form to obtain a year's supply of *Club Journal* for £7.50. This means that not only will we send you your copy post-free to your home if you wish, but two of the 12 editions will be yours for **FREE**.

Please send me a year's supply of *Club Journal*. I enclose a cheque for £7.50 made payable to the Club & Institute Union.

Name:

Home Address:

Postcode:.....

Please send your order to Club Journal,
 Unit 17, St Peter's Wharf, Newcastle upon Tyne NE6 1TZ.

Race Discounts

REDCAR:.....	Saturday 25th August (eve).....	£11 (normally £15)
BEVERLEY:.....	Saturday 1st September.....	£10 (normally £13)
ASCOT:.....	Saturday, 8th September.....	£12 (normally £18)
HAYDOCK:.....	Saturday, 8th September.....	£12 (normally £22)
THIRSK:.....	Saturday, 8th September.....	£12 (normally £15)
NEWBURY:.....	Saturday 22nd September.....	£16 (normally £20)
HAYDOCK:.....	Saturday, 29th September.....	£11 (normally £20)
MARKET RASEN:....	Saturday, 29th September.....	£14 (normally £16)
RIPON:.....	Saturday, 29th September.....	£12 (normally £15)
ASCOT:.....	Autumn Meeting featuring CAMRA Beer Festival Friday, 5th October.....	£8 (normally £13)
ASCOT:.....	Autumn Meeting featuring CAMRA Beer Festival Saturday, 6th October.....	£12 (normally £18)
REDCAR:.....	Saturday 6th October.....	£11 (normally £15)
YORK:.....	Saturday, 13th October.....	£13 (normally £17)
NEWBURY:.....	Saturday 27th October.....	£16 (normally £20)
ASCOT:.....	Saturday, 3rd November.....	£12 (normally £18)
CARLISLE:.....	Sunday, 4th November.....	£10 (normally £15)
MARKET RASEN:....	Sunday, 11th November.....	£14 (normally £16)
WETHERBY:.....	National Charity Raceday Saturday 17th November.....	£14 (normally £26.95)
ASCOT:.....	Saturday, 24th November.....	£12 (normally £18)
HAYDOCK:.....	Saturday, 24th November.....	£12 (normally £22)
CARLISLE:.....	Sunday, 2nd December.....	£10 (normally £15)
LEICESTER:.....	Sunday, 2nd December.....	£9 (normally £16)
CARLISLE:.....	Sunday, 16th December.....	£10 (normally £15)
ASCOT:.....	Saturday, 22nd December.....	£12 (normally £18)
HAYDOCK:.....	Saturday, 22nd December.....	£11 (normally £20)
LEICESTER:.....	Friday, 28th December.....	£9 (normally £16)
NEWBURY:.....	Saturday, 29th December.....	£16 (normally £20)
HAYDOCK:.....	Sunday, 30th December.....	£11 (normally £20)

CIU Racing Club Booking Form

Number of tickets required (minimum 6) _____ Price per ticket £ _____

Racecourse _____ Date of meeting: _____

Cheque enclosed for £ _____

(Made payable to racecourse involved).

Club: _____

Club Address: _____

Post code: _____

Contact Name: _____

Daytime telephone No: _____

Please send this booking form plus cheque
 (made payable to the appropriate racecourse) at least three weeks prior to meeting to:
 Jean Garrett, Club Journal, Unit 17, St. Peter's Wharf,
 Newcastle upon Tyne NE6 1TZ.

CIU CHARITY RACEDAY RETURNS TO WETHERBY

The Union is returning to Wetherby for its National Charity Raceday, after another fantastic year that raised more than £3,000 for our holiday and convalescent centre, Saltburn House, on the north Yorkshire coast.

This year's raceday will take place on Saturday, November 17. The Yorkshire course have kept prices at the same as last year:

A Combined Paddock admission entry for £14 per person will include:

- A bespoke Paddock admission badge for entry to the racecourse and exclusive CIU Paddock Marquee. (Normal paddock admission £15)
- An official race programme (worth £2.50)
- Pie & peas voucher (worth £4.95)
- Five "50p off a pint" vouchers (worth £2.50)
- £2 discounted Tote Betting Voucher (worth £2)

This offers a saving to each individual of nearly £13. In addition, both Wetherby Steeplechase Committee Ltd and their caterers CGC Events will donate £1 each from every ticket sale to Saltburn House. Last year 1,516 CIU Racing Club members took up the offer meaning that a cheque for £3,032 was handed over to Union President George Dawson.

CHEQUE TO NEWCASTLE

Pride of place goes to Farsley WMC near Leeds, who brought 191 members and earned a mention in the race programme. Organiser Michael Backhouse even arranged a trip to the *Club Journal* offices in Newcastle to hand over the booking and the cheque.

Last year's raceday was also supported by the Union's recommended gaming machine suppliers Dransfields who sponsored a race, the Dransfields CIU Charity Raceday Handicap Hurdle, and by John Smith's, part of Heineken UK, the Union's recommended supplier of beer and cider, who provided the 50p-off vouchers.

The day was also livened up by the Driffild Veterans football team from the East Riding of Yorkshire, who regularly come in fancy dress. Last year they staged a race across the final 150 yards of the course dressed in jockeys' silks.

Prices unchanged from last year



Wetherby Chief Executive Jonjo Sanderson presents a cheque for £3,032 to Union President George Dawson and Vice-President John Tobin.

The National Charity Raceday has been running since 1993 when it was first staged at Doncaster along with the Barmaids' Derby – where barmaids were sponsored by their clubs to run the last furlong of the course balancing a pint of beer on a tray. It moved to Wetherby when Doncaster was being refurbished in 2006 and has proved so popular it has stayed there ever since.

A letter will be sent out with a booking form next month but in the meantime clubs can use the usual form on Page 19 to book through the CIU Racing Club. Cheques need to be made out to Wetherby Steeplechase Committee Ltd.



CIU Racing Club members enjoy the facilities in the marquee.

Women walk tall

SPORTS SHORTS

For the first time in the history of York City Branch's CIU race walking events, women

outnumbered men at the St Lawrence Working Men's Club annual walk number three event.

The women kept the upper hand in the end taking advantage of the handicap to take first and second places. The winner was Rachel McMahon ahead of Emma Holmes with Matthew Pugh third.

The fastest loser was Tony Lansbury. He completed the three-and-three-quarter-mile course in a time of 38 minutes and 30 seconds.

• Our National Individual Snooker Final between Dale Clark from The Poplar Social Club in Accrington and Rhydian Richards of Merthyr Tydfil Labour Club will be held on August 18 at Longbridge Social Club in Birmingham.

- Can we remind clubs that automatic disqualification will happen if a completed result sheet is not received by the closing date. If you leave it to the last minute to play the game you will always run the risk of not getting the result in on time.

Some prominent competitors have already been disqualified for this reason. Never rely on somebody else to post it.

EMBROIDERED CLUB TEAMS & STAFFWEAR

Darts, Snooker, Pool, Dominoes & Skittle teams etc
Angling, Golf sections & Staffwear

Prices from just £10 each for quality Polo Shirt
Embroidered with your club name and logo

15 colours to choose from - Sizes up to XXXXL
Tabards and other garments available

For more information phone: 01983 615410 or 07816211658
email: thedogzbolloxclothing@hotmail.com

STEWARDS PLEASE PASS THIS INFORMATION TO YOUR TEAM CAPTAINS

